



For questions or to reserve:
(866) 639-0079

DISCOVER SOUTHEAST ALASKA (JUNEAU TO SITKA)



Enjoy the agility and flexibility of small-ship travel during this expedition cruise through Alaska's Inside Passage. Alongside expert naturalists and knowledgeable on-board crew, navigate narrow channels and waterways inaccessible by larger vessels. While exploring some of nature's more secluded landscapes, encounter Alaska's abundant wildlife, breathtaking scenery, and ice-blue glaciers of unfathomable proportions.

NOTE: Tour information is current as of 4/24/2024.

Program Highlights

- See the spray of whales only yards away and venture into secluded inlets as you get up close to nature, whether from the decks of the *Chichagof Dream* or aboard its skiffs and kayaks.
 - Accompanied by naturalists, including an Orbridge Expedition Leader, learn surprising details about animal behavior, glacier activity, and the wealth of natural spectacles along these protected waters.
 - Discover Alaska's culture and living history during a visit to the Alaska State Museum.
 - Take a guided tour of the Norwegian fishing community of Petersburg.
 - Cruise around the pristine waters of Glacier Bay National Park and Preserve to see the sanctuary's deep fjords, tidewater glaciers, and snow-capped mountain ranges.
-

What's Included

- 7 nights aboard the *Chichagof Dream*
 - All onboard hand-crafted meals: 7 breakfasts, 6 lunches, and 7 dinners—including a special Captain's Farewell Dinner, and complimentary wine and beer at dinner
 - An onboard lecture program and educational guidance of two naturalists plus an Orbridge Expedition Leader
 - Guided kayaking, hiking, walking, skiff excursions, and wildlife viewing where humpback whales, orcas, brown bears, Steller sea lions, harbor seals, sea otters, arctic terns, bald eagles, and other populations are frequently spotted
 - All port fees and entry fees to parks, preserves, museums, attractions and special excursions as described in the itinerary
 - Gratuities for Orbridge Expedition Leader, airport transfer drivers, and drivers/guides on included land excursions
 - Airport transfers for guests arriving and departing during the suggested times
-

Itinerary



The Chichagof Dream itinerary order and daily activities (including skiff rides, kayaking and hiking) are subject to change based on weather, wildlife viewing, and navigating conditions.

Day 1: Arrive in Juneau – Embarkation

Today, travel to Juneau from your home city or from Anchorage if you visited Denali National Park on the six-day Orbridge Pre-Tour.

For those arriving by the suggested time, join an included excursion to explore the Alaska State Museum. Peruse the museum's artifacts and art objects that tell the tale of Alaska's history, including extensive ethnographic exhibits of the cultures of Alaska's native people.

NOTE: The originally planned tour of Mendenhall Glacier will be replaced with an alternate excursion due to the reduction of permits granted by the National Park Service for 2024.

Afterward, take a short bus ride to the *Chichagof Dream* for embarkation. Enjoy your

first dinner on board as you get to know your Expedition Leader, naturalists, crew, and travel companions.

Overnight: Chichagof Dream (D)

Day 2: Icy Strait

Relax on deck with your binoculars and a hot cup of cocoa as you sail through Icy Strait in search of wildlife, including orcas (killer whales), Steller sea lions, seals, porpoises, and magnificent humpback whales. Watch the treetops along the shoreline for bald eagles.

Overnight: Chichagof Dream (B,L,D)

Day 3: Glacier Bay National Park

Arrive in Glacier Bay National Park, where scientists have found exposed rock that's believed to be more than 200 million years old. While at Bartlett Cove, visit the park lodge and visitor center or participate in a guided forest walk. Watch for puffins, sea lions, harbor seals, sea otters, mountain goats, bears, and eagles, and enjoy the spectacular scenery of Alaska.

Overnight: Chichagof Dream (B,L,D)

Day 4: Tracy Arm Fjord

This morning, experience Tracy Arm, a narrow fjord that winds through towering mountains and massive glaciers. Witness the "calving" of glaciers as gigantic chunks of ice break and crash into the water. Watch for harbor seals that often dot the ice floes and mountain goats on nearby perches. In the afternoon, if conditions permit, glide through and discover coves or bays by skiff, soaking in the splendor of some of the most untouched wilderness in the world.

Overnight: Chichagof Dream (B,L,D)

Day 5: Petersburg | Frederick Sound

This morning, visit charming Petersburg, a fishing village founded by a Norwegian fisherman in the late 1800s. At the Sons of Norway Hall, see customary Norwegian dances and taste traditional home-made pastries and cookies. After lunch on board or in town, take a skiff across Wrangell Narrows for a beautiful hike on the Petersburg Creek Trail. Depart Petersburg in the late afternoon and sail through Frederick Sound in search of whales.

Overnight: Chichagof Dream (B,L,D)

Day 6: Eastern Baranof Island | Hidden Falls

Experience a rare tour of the Hidden Falls Hatchery and learn about the release of Chinook, coho, and chum salmon fry and smolts, and the vital role fishing has played in Alaska for centuries. In the evening, share the day's adventures with your fellow travelers over dinner.

Overnight: Chichagof Dream (B,L,D)

Day 7: Lake Eva

Spend the morning cruising to Lake Eva. Take a guided hike or join a skiff excursion (if conditions permit). Recount your trip highlights with fellow travelers tonight during a Captain's Farewell Dinner.

Overnight: *Chichagof Dream* (B,L,D)

Day 8: Sitka – Disembarkation | Depart Sitka

Disembark this morning after breakfast. Take a complimentary shuttle to your accommodation if you reserved a post-night in Sitka or to the airport for your flight home. (B)

B = Breakfast, L = Lunch, D = Dinner

(Itinerary subject to change.)

Activity Level

Moderate

This program offers a variety of activities: skiff rides, walking, hiking, and kayaking. Activities are not strenuous for guests with average mobility. Walks and hikes are leisurely in pace to allow guests the opportunity to see and learn as much as possible about the region. Skiffs provide the mode for much of the exploration on this program and sure-footed guests can enter/exit them with little trouble. The *Chichagof Dream* crew is diligent in assisting guests while boarding and exiting the ship and small craft. Guests with no previous experience can easily handle the double kayaks. **We expect that guests on this program can walk with good balance and go up and down stairs easily without assistance, as the *Chichagof Dream* does not have an elevator.**

Accommodations

Chichagof Dream



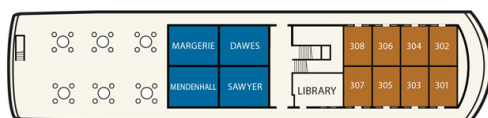
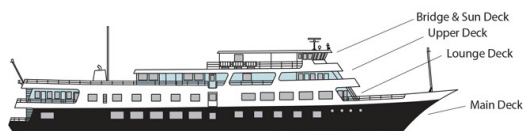
Accommodating 76 guests, the 207-foot *Chichagof Dream* was designed to go where large ships cannot—navigating guests to the best views possible of the surrounding nature-filled landscape. Experience Alaska up close as you watch for wildlife from skiffs or kayaks and learn about the indigenous peoples of the region. On board the ship are your knowledgeable crew, Orbridge Expedition Leader, and expert naturalists who share their hospitality, uncanny knack for spotting wildlife, and fascinating secrets behind the bountiful beauty that surrounds you.

The ship's well-appointed, intimate, and unassuming style allows travelers to experience the true heart and soul of Alaska. The *Chichagof Dream* features expansive viewing areas on the bow and aft outdoor promenade decks, a hull design optimized for supreme comfort in Alaskan waters, and forward-facing windows in the spacious lounge that extend from the deck to the ceiling, offering panoramic views off the bow.

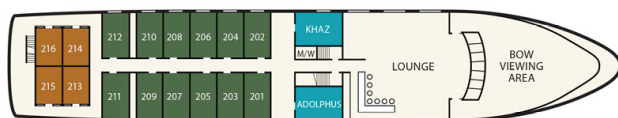
Enjoy a relaxed cruising speed ideal for viewing the endless surrounding fjords, glaciers, and wildlife. The ship offers complimentary expedition gear while touring, including rain jackets, rain pants, and boots. Plus, each stateroom is outfitted with binoculars. Nothing will be missed as you leisurely traverse the channels, bays, and islands of Southeast Alaska.

Note: Bed size preferences are requested when passengers complete the guest information form. If no specific requests are made, double occupancy cabins will be configured with two twin beds. This applies to AAA and Deluxe categories.

Chichagof Dream / DECK PLAN



upper deck



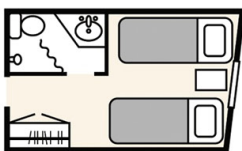
lounge deck



main deck

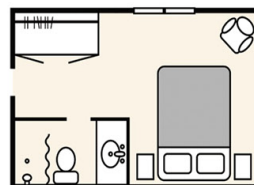
A Approx. 105 sq. ft.

Two twin beds, two porthole windows, spacious wardrobe, private bathroom with shower.



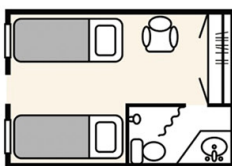
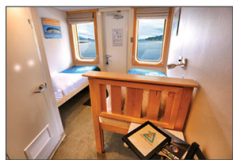
Deluxe Approx. 155 sq. ft.

One queen or two twin beds, one large picture window, spacious wardrobe, private bathroom with shower.



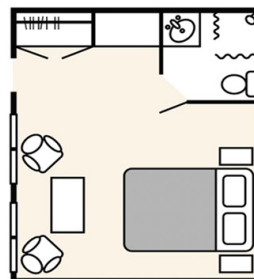
AA Approx. 109 sq. ft.

Two twin beds, one or two picture windows, spacious wardrobe, private bathroom with shower.



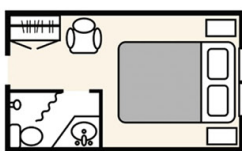
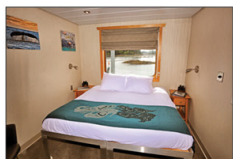
Deluxe Suite (upper deck) Approx. 208 sq. ft.

One queen bed, two large picture windows, spacious wardrobe, vanity, sitting area, private bathroom with shower.



AAA Approx. 109 sq. ft.

One queen or two twin beds, one large picture window, spacious wardrobe, private bathroom with shower.



(Accommodations subject to change.)

Optional Pre-Tour

DENALI NATIONAL PARK



Journey into the scenic wilds of America's northernmost state, through Alaska's rugged forests and wildlife. Your destination: the magnificent six-million acre Denali National Park and Reserve. Uncover the many wonders of the park during guided trail hikes and walks. And choose from a variety of exciting optional excursions to further personalize your experience. A highlight of this adventure includes traveling the historic Alaska Railroad route with superior viewing from your train's upgraded glass-dome seat.

Itinerary

Day +1: Arrive in Fairbanks, Alaska

Welcome to Fairbanks—known as “The Golden Heart of Alaska,” a reference to the discovery of gold in 1902 and its location in Alaska’s interior. Meet your Orbridge Expedition Leader and fellow travel companions at a welcome dinner, and prepare for your upcoming Denali activities and excursions.

Overnight: Pike's Waterfront Lodge (D)

Day +2: Fairbanks | Alaska Railroad | Denali National Park

With your Orbridge Expedition Leader, board the train to Denali National Park, traversing one of the most scenic stretches of the world-famous Alaska Railroad. It cuts through the northern boreal forests of interior Alaska where gold miners came to seek their fortune. Enjoy a rich panoply of views of America's northernmost frontier as you travel in the upgraded glass-dome train car.

Delight in breakfast aboard the train before arriving in Denali. Upon arriving at the

park, take a short walk with your Expedition Leader to the Denali National Park Visitor Center for a brief orientation. View the exhibits or sign up for ranger-led talks, hikes, and other activities available during your stay in Denali. Afterward, take the courtesy shuttle to the Grande Denali Lodge.

This evening, enjoy a lively dinner where you'll explore fun and unique features of the park with a presenter from the Murie Science and Learning Center.

Overnight: Grande Denali Lodge (B,D)

You may purchase the following optional excursions in advance from our Guest Services team up to 30 days prior to your departure.

DogGone! Dog Sled Tour: Visit the home and kennel of Iditarod musher, Mike Santos, for an authentic look into rural Alaskan life. Get a behind-the-scenes look at what goes into creating a championship dog-sled team, and hear compelling stories from the trail—see actual racing sleds, arctic survival gear, and equipment used to traverse 1,100 miles of Alaska's most rugged terrain. Meet Alaskan husky puppies before watching adult huskies explode from the kennel on a training run. This excursion (including round-trip transportation) lasts approximately 3 hours. Transportation is included.

\$65 per person; \$55 per youth 12 and under (not recommended for children under 3)

Denali Glacier Landing Flight: This exclusive 100-minute plane tour of Denali is the only tour where guests are granted permission to land and stand (for approximately 20-25 minutes) on one of Denali's glaciers. On board the aircraft, witness dramatic views of Denali's summit and the surrounding peaks and glaciers in the park, including the world's deepest gorge at Ruth Glacier. Flight routes may change based on weather conditions. This excursion (including round-trip transportation) lasts approximately 3.5 hours. Transportation is included.

\$685 per person; \$635 per youth 10 and under

Arctic Circle Flight: Travel to the Arctic Circle on an extensive air-and-land adventure. From Denali, fly north across the Arctic Circle for a birds-eye view over the Alaskan wilderness, including the Brooks Mountain Range, Yukon River and the Trans-Alaska Pipeline. Land and visit an Arctic community with a population of less than 15. In the Brooks Mountain Range, take a walking tour with your guide, a descendant of the first homesteaders, and learn about subsistence living, survival ingenuity and the choice to live in the Arctic year-round. Re-board the plane for the return flight and, if the weather permits, take in aerial views of Denali. Upon returning, receive an official Arctic Circle Certificate. This excursion (including round-trip transportation) lasts approximately 7 hours. Transportation is included. Age and weight restrictions apply.

\$565 per person (not recommended for youth under 10)

Wilderness Wave Raft Tour: Enjoy a rafting trip along the natural boundary of Denali National Park. Glide through 11 miles of glacially carved valleys and amazing vistas with panoramic views of Mount Fells and the Nenana Canyon with your rafting guide. Although you'll encounter the occasional rapid, this option is mellow enough for all ages. You can actively paddle or sit back and relax.
\$120 per person; \$70 per youth 11 and under

Canyon Wave Raft Tour: Set off on a rafting excursion through 11 miles of amazing rapids on the Nenana River with spectacular views of Mount Healy and Sugarloaf Mountain. Paddle with the rafting team or sit back and enjoy the ride on the oar boat.
\$120 per person; \$70 per youth 11 and under

Denali Wilderness ATV Adventure: Whether a novice or experienced ATVer, this excursion is a memorable experience in the Alaskan wilderness on your own automatic single ATV or 2-passenger side-by-side ATV. Led by knowledgeable guides, ride along trails around Denali National Park, at speeds up to 30 mph, including photography stops with breathtaking 360° views of the Alaska Range. This excursion covers approximately 10 miles during 1.5 hours on the trails.
\$130 per single-rider ATV; \$225 per 2-person side-by-side ATV

Midnight Sun ATV Adventure: Make the best part of your day the start of your night. Novice and experienced riders, night owls and daylight adventurers can appreciate this exclusive Wilderness Adventure guided tour departing at 9:00 pm during the weeks surrounding the Summer Solstice. The Midnight Sun illuminates forest trails and prolonged sunsets bathe the mountains in a rosy glow. Choose from an automatic single ATV or multi-passenger side-by-side ATV. This excursion covers approximately 10 miles during 1.5 hours on the trails. *NOTE: This tour is offered during certain departure dates due to seasonality and varying hours of daylight. Call for more information.*
\$130 per single-rider ATV; \$225 per 2-person side-by-side ATV

Optional excursions are non-refundable within 90 days of departure; prices subject to change. Not all excursions may be available. Availability is subject to sufficient participation and weather conditions. Space is limited. We recommend reserving early for best availability. For flight excursions, weight and minimum age requirements apply. Individual dressed weight and birthdate must be provided at time of booking.

Day +3: Denali National Park Wilderness Excursion

Today, travel along the Denali National Park Road on a naturalist-guided, back-country adventure for incredible scenery and some of the best opportunities to view the majestic Mount Denali. This tour includes walks in Denali's wilderness to learn more about its landscapes, wildlife, and history. Enjoy a box lunch in this special setting. Be sure to have your binoculars ready to spot for the many species of plants and wildlife.

The evening is at leisure.

Overnight: Grande Denali Lodge (B,L)

Day +4: Denali National Park

After breakfast, participate in one of the pre-purchased optional excursions or enjoy free time to explore Denali. Take advantage of the many self-guided hiking trails or informative ranger-led talks and activities offered in the park while marveling at the scenery.

Later, reconvene for wine and hors d'oeuvres as you listen to Alaskan homesteader, Jimmie Hendricks, as he relives his journey and lifelong dream to explore Alaska and make it his home. Be amazed by his years of training, hard work, determination, and eventual summiting of North America's tallest peak.

Overnight: Grande Denali Lodge (B,R)

Day +5: Denali National Park | Talkeetna | Anchorage

After an early breakfast, continue the journey to Anchorage by motor coach, following the nearby Alaska Railroad route.

Arriving in Talkeetna, embrace the panoramic views of Denali, North America's tallest peak (weather permitting). Enjoy free time to explore the Talkeetna Historical Society Museum and the Walter Harper Talkeetna Ranger Station to learn about mountaineering operations, the scenic Talkeetna river trail, and various shops and cafes in town.

Arriving to the Anchorage Museum—Alaska's largest museum—learn about Alaska's history, native cultures and many other facets of the Last Frontier.

This evening gather with fellow travel companions for a farewell reception followed by leisure time to explore downtown Anchorage's many fine eateries and shops.

Overnight: Hotel Captain Cook (B,L,R)

Day +6: Depart Anchorage

After breakfast, take the complimentary transfer to Anchorage International Airport for the group flight to join guests on the main program. (B,L)

B = Breakfast, L = Lunch, D = Dinner, R = Reception

Pre-tour space is limited. We recommend reserving early for best availability.

(Itinerary subject to change.)

Activity Level

Moderate

Guests should be able to walk a mile at a moderate pace, get in and out of a motor coach, and walk up a flight of stairs without assistance.

Accommodations

Pike's Waterfront Lodge



Situated on the Chena River, Pike's Waterfront Lodge offers unbeatable views and warm, comfortable accommodations. Enjoy hotel amenities, including an aromatherapy steam room, fitness room, restaurant, cozy lounge, ATM, 24-hour guest laundry and gift shop.

Room Amenities: Chena River view room, air conditioning, flat-screen cable TV, complimentary Wi-Fi, phone, microwave, mini-fridge, coffee and tea maker, safe, and en suite bathroom with hair dryer and Aveda® shampoo, conditioner, lotion, and soap.

Grande Denali Lodge



The Grande Denali Lodge is located just north of the Denali National Park main entrance on the slopes of Sugarloaf Mountain with unparalleled views of the surrounding Denali wilderness and the Nenana River Canyon. Spacious guest rooms, on-site dining, and dedicated staff make the Grande Denali Lodge the perfect place to launch all your adventures. Amenities include a restaurant, a bar and lounge, convenient shuttle services, a self-service laundromat, complimentary Wi-Fi, and an espresso/snacks stand.

Room Amenities: View room, air conditioning, cable TV, complimentary Wi-Fi, phone, coffee and tea maker, mini-fridge and en suite bathroom with shampoo, conditioner, lotion, and hair dryer.

Hotel Captain Cook



Built by former Secretary of the Interior and two-term Alaska Governor Walter J. Hickel to help Anchorage's economy recover from the devastating 1964 earthquake, this renowned hotel boasts Alaskan history from its reclaimed teak interior features to artifacts and art illustrations from Captain Cook's 18th-century voyage. Expect exceptional Alaskan hospitality and service at its four restaurants, on-site shops, athletic club, and spa.

Room Amenities: Deluxe room, air conditioning, satellite TV, complimentary Wi-Fi, phone, coffee and tea maker, bathrobes and slippers, safe, and en suite bathroom with shampoo, conditioner, and hair dryer.

(Accommodations subject to change.)

What's Included

- 1 night accommodation at Pike's Waterfront Lodge in Fairbanks, 3 nights accommodations at Grande Denali Lodge, and 1 night accommodation at Hotel Captain Cook in Anchorage
- 5 breakfasts, 3 lunches, 2 dinners, and 2 receptions
- Rail transport to Denali National Park along the distinguished Alaska Railroad with reserved seating in the upper-level glass-dome car and priority seating in the dining room for breakfast and two complimentary alcoholic beverages (and unlimited non-alcoholic beverages)
- Hotel courtesy shuttle between the rail depot, Grande Denali Lodge, the Denali Park

Visitor Center and town

- A full-day guided wilderness tour into Denali National Park
- Deluxe motor coach transport to Talkeetna and Anchorage
- Services of an Orbridge Expedition Leader
- Gratuities for Orbridge Expedition Leader, local guides, drivers, porters, housekeeping, and wait staff for included meals
- Airport transfers for guests arriving and departing during the suggested times

Terms and Conditions

THE FOLLOWING TERMS AND CONDITIONS ARE EFFECTIVE OCTOBER 1, 2022.

Note: Travel credits and transfers are subject to the Terms and Conditions agreed upon at the time of the original reservation.

ORBRIDGE® TERMS AND CONDITIONS, RELEASE AND BINDING ARBITRATION AGREEMENT

For *Around the World by Private Jet* Terms and Conditions, [click here](#).

This Agreement includes contractual terms and conditions and releases Orbridge, LLC from liability. Any payment to Orbridge, including but not limited to deposits or full payments, constitutes your acknowledgement of, and agreement to, this Terms and Conditions, Release and Binding Arbitration Agreement Orbridge set forth below and in subsequent tour documents.

Limitation of Responsibility. Orbridge LLC, its shareholders, directors, officers, employees and affiliates (collectively, "Orbridge"), does not own or operate any entity that provides goods or services for your trip including, for example, ownership or control over hotels or other lodging facilities, airline, vessel, bus, van or other transportation companies, local ground operators, providers or organizers of optional excursions or equipment used thereon, food service or entertainment providers, etc., even if they use the "Orbridge LLC" or "Orbridge" name. All such persons and entities are independent contractors. As a result, Orbridge is not liable for any negligent or willful act or failure to act of any such person or entity, or of any other third party. Without limitation, Orbridge is not responsible for any injury, loss, or damage to person or property, death, delay or inconvenience (collectively, "losses") in connection with the provision of any goods or services occasioned by or resulting from, but not limited to, acts of God, acts of government, force majeure, acts of war or civil unrest, insurrection or revolt, strikes or other labor activities, criminal or terrorist activities of any kind, or the threat thereof, overbooking or downgrading of accommodations, structural or other defective conditions in hotels or other lodging or vessel facilities, mechanical or other failure of airplanes or other means of transportation or for any failure of any transportation mechanism to arrive or depart timely or safely, dangers associated with or bites from animals, pests or insects, marine life or vegetation of any sort, dangers incident to recreational activities such as scuba diving, snorkeling, paddle boarding, surfing, swimming, kayaking, sailing, canoeing, rafting, hiking, bicycling, rock climbing, etc., sanitation problems, food poisoning, lack of access to or quality of medical care, difficulty in evacuation in case of a medical or other emergency, illness, epidemics, pandemics or the threat thereof or for any other cause beyond the direct control of Orbridge. In addition, I release Orbridge from its own negligence and assume all risk thereof.

Rates. Program rates are based on minimum participation levels, current fares and costs (air, water, land, rail), tariffs and currency values. While Orbridge does everything possible to maintain the listed program rates, they are subject to change effective immediately upon posting unless otherwise specified by Orbridge. In the case of invoicing errors, we reserve the right to re-invoice with the correct pricing.

Reservations, Deposits and Final Payment. To secure your reservation, deposits are due upon placing a reservation as follows: (1) \$850 per person per program and \$500 per person per pre-tour and/or post-tour except for programs noted in (2) and (3); (2) \$2,500 per person for Antarctica Discovery and African Expedition and \$500 per person per pre-tour and/or post-tour; (3) a non-refundable \$750 per person is due for Tanzania Wildlife Safari's Rwanda pre-tour. Orbridge accepts payment by check, automated clearing house ("ACH"), wire transfer or major credit card.

Final payment, including any pre-tour and/or post-tour, optional excursion(s) fees and optional electives, is due for: (1) all programs except Antarctica Discovery and African Expedition—no later than 90 days prior to the program's scheduled departure date; (2) Antarctica Discovery and African Expedition—no later than 195 days prior to the program's scheduled departure date.

If your reservation is made between the final payment due date and the program's scheduled departure date, the full cost of the program, plus any pre-tour and/or post-tour, optional excursion(s) fees and optional electives, is due at the time of registration.

If final payment is not received by Orbridge by the final payment due date, Orbridge may, at any time and with or without notice,

cancel your reservation in its sole discretion with no right of refund.

Reservation Grace Period. Reservations made no sooner than 120 days prior to all programs' scheduled departure date, except Antarctica and African Expedition, and no sooner than 225 days prior to Antarctica's and African Expedition's departure date may be cancelled within 30 days following the reservation date ("Grace Period") for a full refund.

All payments made for Tanzania Wildlife Safari's Rwanda pre-tour are non-transferrable and non-refundable.

Notice of termination must be received by Orbridge during the Grace Period and provided in writing either via email or mailed letter. The date of receipt will be used for the effective date.

Reservation Changes. Reservation changes (including, but not limited to, name changes) are subject to availability and cannot be guaranteed. Reservation changes will not incur an administration fee except in the following cases: 1) Reservation changes completed 90 or fewer days from the program's scheduled departure date for all programs except Antarctica and African Expedition will incur a \$150 administrative fee plus any third-party penalties and/or charges. 2) Reservation changes completed 195 or fewer days from the program's scheduled departure date for Antarctica Discovery and African Expedition will incur a \$150 administrative fee plus any third-party penalties and/or charges. In addition, any reservation changed from double occupancy to single occupancy will be charged the single occupancy rate, which will be due at the time of final payment or upon receipt of an updated invoice if received after the tour's final payment due date.

Reservation Cancellation and Refunds. Notice of cancellation must be submitted to Orbridge in writing either via email or mailed letter. The date of receipt will be used for the effective date and the cancellation will be processed as follows:

(a) For all programs except those noted in (b) and (c), if the cancellation notice is received by Orbridge more than 90 days prior to the program's scheduled departure date, all monies paid to Orbridge for the main program and for any pre-tour and/or post-tour will be refunded less an administrative fee of \$350 per person for the main program and \$200 per person for a pre-tour and/or post-tour. If the cancellation notice is received by Orbridge between 90 and 76 days prior to the scheduled departure date, a 25% cancellation fee will be applied to the full cost of the program, including any pre-tour and/or post-tour, optional excursion(s) fees and optional electives, and the balance will be refunded. If the cancellation notice is received by Orbridge between 75 and 61 days prior to the scheduled departure date, a 50% cancellation fee will be applied to the full cost of the program, including any pre-tour and/or post-tour, optional excursion(s) fees and optional electives, and the balance will be refunded. If the cancellation notice is received by Orbridge between 60 and 46 days prior to the scheduled departure date, a 75% cancellation fee will be applied to the full cost of the program, including any pre-tour and/or post-tour, optional excursion(s) fees and optional electives, and the balance will be refunded. If the cancellation notice is received by Orbridge within 45 days prior to the scheduled departure date, a 100% cancellation fee will be applied to the full cost of the program, including any pre-tour and/or post-tour, optional excursion(s) fees and optional electives.

(b) For Antarctica Discovery and African Expedition, if the cancellation notice is received by Orbridge more than 195 days prior to the scheduled departure date, all monies paid to Orbridge for the main program and for any pre-tour and/or post-tour will be refunded less an administrative fee of \$950 per person for the main program and \$200 per person for a pre-tour and/or post-tour. If the cancellation notice is received by Orbridge between 195 and 150 days prior to the scheduled departure date, a 25% cancellation fee will be applied to the full cost of the program, including any pre-tour and/or post-tour, optional excursion(s) fees and optional electives, and the balance will be refunded. If the cancellation notice is received by Orbridge between 149 and 120 days prior to the scheduled departure date, a 50% cancellation fee will be applied to the full cost of the program, including any pre-tour and/or post-tour, optional excursion(s) fees and optional electives, and the balance will be refunded. If the cancellation notice is received by Orbridge within 119 days prior to the scheduled departure date, a 100% cancellation fee will be applied to the full cost of the program, including any pre-tour and/or post-tour, optional excursion(s) fees and optional electives.

(c) All payments made for Tanzania Wildlife Safari's Rwanda pre-tour are non-refundable.

A 100% cancellation fee applies to all non-refundable airfare. Refunds, if any, will be processed within 30 days of our receipt of your written notice.

Travel Insurance. Orbridge strongly recommends that you purchase travel and cancellation insurance to protect your investment in the event of unexpected or unforeseen circumstances. In addition, we recommend that you consider obtaining a policy(ies) that will cover emergency medical evacuation insurance and cancel for any reason insurance. Travel and cancellation insurance policies and dates by which policies must be purchased vary by provider/insurer, maximum coverage (including cancel for any reason) is generally only available for purchase within 14 days of your reservation being confirmed. It is advised to determine your insurance needs and make necessary arrangements soon after reserving on tour. If you do not have, but are interested in purchasing, travel and cancellation insurance please contact us.

Program Cancellations or Postponements. All programs are subject to cancellation or postponement by Orbridge prior to the scheduled departure date for reasons such as, but not limited to, insufficient participation, or logistical problems that, in Orbridge's sole judgment, may impede program operations or represent conditions or events that may expose program guests and/or Orbridge to undue risk of harm, injury, damage or inconvenience. In the event of program cancellation or postponement by Orbridge, Orbridge may offer you alternative arrangements such as the option to join the same tour on a different date or a different tour. If the price of your alternative booking is lower than your original booking price, Orbridge will refund the difference within 30 days of the alternative program's departure date. If it is higher than your original booking price, Orbridge will invoice you the difference and you will be responsible therefor. Transferred guests are subject to the terms of the original tour. Except for force majeure, if a program is cancelled or postponed by Orbridge, Orbridge will refund all payments made within 30 days of notice of program cancellation or postponement if an alternative arrangement is not offered.

Itineraries. Accommodations, the itinerary, travel directors or expedition leaders, lecturers, hosts, faculty or organization representative, and arranged excursions are subject to change or substitution at any time due to unforeseen circumstances or circumstances beyond Orbridge's control. Reasonable efforts will be made to operate programs as planned, however adjustments, substitutions and changes may occur after the final itinerary has been issued. Orbridge may, in its sole discretion, withdraw a

program or any part of it, make such alterations or substitutions to the itinerary or program inclusions as it deems necessary or desirable, and pass on to program participants any expenditures or additional costs caused by any such adjustments, or by delays or events beyond its reasonable control.

Not Included. Unless otherwise specifically noted in the itinerary, program prices do not include the following expenses, which if applicable are your sole responsibility to pay and satisfy: trip cancellation insurance and passenger travel protection plan; domestic, international, and internal airfares except as indicated in program inclusions; transfers and luggage handling fees except in connection with scheduled group flights; costs associated with obtaining passports or entry visas; airport departure taxes; airline ticketing fees; airport transfers when arriving/departing on other than scheduled group dates; excess baggage charges; any new value added taxes or other taxes added to program costs by applicable governmental authorities; gratuities to drivers, guides, or ship's crew not specified; meals and beverages other than those specified as being included in the itinerary; sightseeing not included in the itinerary; personal expenses such as laundry, communication charges and optional activities (which are subject to availability); ship, air, or transportation fuel surcharges, if applicable; any items not on the "included" list of the tour documents.

Health and Fitness to Travel. Through your participation in your tour, you assume responsibility for your own health, safety, and welfare and acknowledge that Orbridge cannot absolutely guarantee your safety or health. Your physician can provide guidance on your personal health risk and precautions to take while traveling. Some programs include physically active elements. To enjoy these programs as intended, a minimum level of fitness is required and Orbridge will require all guests to follow local, state, national and/or World Health Organization health and safety mandates. Accordingly, you must be in good physical and mental condition to participate. You represent that you have no physical, mental or other condition, impairment or disability that may or will cause or create a risk of injury or other hazard to yourself or others in respect to any aspect of the program you have selected. Orbridge may, in its sole discretion, limit, restrict or prohibit from participation in any aspect of any program any individual that it considers in its sole discretion to be impaired or unsuitable due to fitness level. In addition, Orbridge may, in its sole discretion and at the participant's sole expense, remove the guest from the program, or restrict the program-related activities of any individual whose physical or mental condition may or is likely to cause a hazard to himself/herself or others, or otherwise impair the enjoyment of other program participants. Any physical condition requiring special attention, diet, or treatment must be reported in writing to Orbridge at the time a program reservation is made. Should you have any questions or need any clarification about a specific program, please ask for details at the time of registration. Orbridge will try to accommodate your situation if possible.

Accessibility. Orbridge cannot guarantee that the transportation, lodging, and entertainment/sightseeing accommodations will be accessible to all persons regardless of their physical and mental condition. In addition, many of the activities involved in each program include walking or the like for some distance on uneven ground or pavement or moving water as well as the ability to walk up and down stairs without assistance. Should any individuals seeking to participate in a travel opportunity need special accommodations to ensure their enjoyment of the trip, kindly provide notice at the time the reservation is submitted, and we will see if your participation is feasible. Please understand that the Americans with Disabilities Act is inapplicable outside the United States.

At the time of reservation, Orbridge needs to be notified to determine if the special needs of an individual traveler can be met through special arrangements. It is possible that minor modifications to the services can be provided, but only if Orbridge is made specifically aware of anticipated needs. This notification should be made in writing no less than two weeks prior to the planned travel. Neither Orbridge nor any of the providers of transportation, lodging, or other services can provide special accommodations without this advance notice.

Where an individual with certain specific needs will be traveling with a group, it is necessary for other members of that person's group to be available to assist as necessary. Neither employees of Orbridge nor any suppliers of services can allow any of their employees to provide physical assistance to any guests.

Travel Advisories. The State Department and the Centers for Disease Control periodically issue statements and advisories about risks to travelers. These statements are country specific and contain important information. The State Department information can be found at www.travel.state.gov, and the CDC statements can be found at www.cdc.gov. Orbridge highly recommends everyone to review these sites.

Children. Orbridge welcomes the participation of children in most of its programs. However, in the event you do include your children or other minors for whom you serve as legal guardian ("Dependents") in your travel plans, you hereby agree that you are and shall be at all times solely responsible for their care, actions, safety and protection during the program and any pre-tour and/or post-tour. Should you have any questions whether a particular program or inclusion is possible or suitable for your Dependent(s), please contact us.

Baggage. Program rates include the price of one piece of policy-compliant baggage per person during the land, cruise or rail portion of the program only unless specified in the itinerary. Air carriers and motor coaches often impose significant other restrictions or limitations on the number of pieces, size and weight of luggage and may reject or impose additional fees on luggage exceeding such limitations or restrictions. All such fees are your sole cost and responsibility. In addition and regardless of location or transportation method, your baggage and personal effects are and shall at all times be at your sole risk throughout the entire program. Please check with your air carrier for other applicable baggage restrictions and limitations.

Travel Documents. All guests are responsible for possessing and maintaining necessary travel documents. These documents shall be valid under state and federal law and as required by foreign countries being visited. Orbridge is not responsible for invalid travel documents and repercussions thereof.

For U.S. citizens, valid passports are required for travel to foreign destinations and some countries require specific visas prior to entry. Please direct any questions in respect to visa requirements to Orbridge, which shall use commercially reasonable efforts to provide answers as a courtesy, provided that it shall remain your sole responsibility and obligation to obtain and verify that you have all required travel documents, including visas, necessary and appropriate for the program location(s) and sufficient blank pages in your passport for visas and immigration stamps. In addition, some countries require your passport to have an expiry date of not less than six months after your anticipated return to the United States. Orbridge disclaims all liability for any expenses or costs you may incur due to your prohibition or restriction from entering a country on the program itinerary or reentering the United

States at the conclusion of the program. If travel documents fail to meet these requirements, boarding of aircraft or ship to any international destination may be denied and entry into such countries may be denied.

Photos and Videos. Orbridge may take photographs and/or video of its trips and participant grants Orbridge permission to do so and for it to use such for promotional or commercial use without payment of any compensation to participant. In addition, Orbridge may use, without compensation, any photographs or video taken by tour participants and submitted to Orbridge or to SmugMug without payment of any compensation. In submitting any such photographs or videos to Orbridge or SmugMug, participant warrants that he or she took the image and that the dissemination of same does not violate the copyright rights of any person.

Data Rights, Permissions. Data collected and/or derived by Orbridge resulting from your use of the Website is the sole and exclusive property of Orbridge and may be used in any manner consistent with its Privacy Policy located on Orbridge's website. By submitting to Orbridge a digital or hard copy form that includes your personal contact information, including without limitation, your email address and telephone number(s), you give Orbridge and any other entity identified on the form permission to use that information to contact you and as otherwise may be described on the form and/or in the Privacy Policy.

Other. Dates, program details and costs are based on tariffs, exchange rates and other information current at the time of printing, but are subject to change at any time. While we do not anticipate material revisions of the itinerary or its included features, we do reserve the right to substitute accommodations or modes of transportation and to make any changes in the itinerary Orbridge, in its sole discretion, deems necessary and in that case any additional expense or cost will be paid by the individual guest. Your baggage and personal effects are your sole responsibility at all times. It is prohibited by federal law and Orbridge policy to bring illegal drugs, firearms, or other contraband (including marijuana for medical or recreational purposes) on any program.

Orbridge may at any time and without notice modify these terms and conditions, and any modification so made will be effective for all reservations made from and after the posted Effective Date.

In the event any term in these terms and conditions is deemed unenforceable the unenforceable clause shall be interpreted to give effect to the parties' intentions to the greatest enforceable extent, and all other provisions hereof shall remain fully enforceable according to their terms.

Binding Arbitration. I agree that any dispute concerning, relating, or referring to this contract, the brochure, or any other literature concerning my trip, or the trip itself shall be resolved exclusively by binding arbitration in Seattle, Washington, either according to the then existing commercial rules of the American Arbitration Association or pursuant to the Comprehensive Arbitration Rules & Procedures of the Judicial Arbitration and Mediation Services, Inc. (JAMS). Such proceedings will be governed by substantive (but not procedural) Washington law. The arbitrator and not any federal, state, or local court or agency shall have exclusive authority to resolve any dispute relating to the interpretation, applicability, enforceability, conscionability, or formation of this contract, including but not limited to any claim that all or any part of this contract is void or voidable. By agreeing to these terms and conditions, both parties are waiving their right to a trial by jury. Any arbitration commenced against Orbridge must be on behalf of only the individual(s) to this Agreement and his or her immediate family members traveling with them, such as a spouse or child. Under no circumstances can participant be part of a class or other joint action.

Acceptance of Contract. ANY PAYMENT TO ORBRIDGE, INCLUDING BUT NOT LIMITED TO DEPOSITS OR FULL PAYMENTS, CONSTITUTES YOUR ACKNOWLEDGEMENT OF AND AGREEMENT TO THESE TERMS AND CONDITIONS SET FORTH ABOVE AND IN MORE SPECIFIC TOUR DOCUMENTS.

©2023 ORBRIDGE LLC. All rights reserved.

ORBRIDGE, ORBRIDGE DESTINATION SPECIALISTS, ORBRIDGE GROUP, and OBR are service marks of Orbridge LLC. The service marks and trademarks of any supplier appearing in these materials are owned by each respective company.

WAST# 602828994; CAST# 2098750-40

(v. 032123)
