



SPARTAN
PATHWAYS TRAVEL
MICHIGAN STATE UNIVERSITY ALUMNI

OCTOBER 16-24, 2024

with optional pre-tour
DENVER TO MOAB
ABOARD ROCKY MOUNTAINEER

Southwest

NATIONAL PARKS

BOOK WITH
CONFIDENCE

30-day refund
guarantee

A Discovery of America's Natural Wonders



Dear Spartans,

Take part in this journey to the exceptional national parks and monuments of the Southwest. Travel to Grand Canyon National Park for awe-inspiring views from the park's rim. Admire the beauty of light striking Antelope Canyon's narrow sandstone walls. Share a peaceful evening with Navajo storytellers, and ponder cultures past and present at a petroglyph site during a river raft ride down Glen Canyon.

Continue to Utah where you'll spend enjoyable time at Bryce Canyon and Zion National Parks—viewing rock formations and otherworldly landscapes that must be seen to be believed.

With the guidance of an expert Orbridge Expedition Leader and the comforts of a private motor coach, there is no better way to visit our national parks.


PLUS: Kick off your adventure in the Southwest by joining the optional pre-tour, Denver to Moab aboard the *Rocky Mountaineer*. Enjoy nature's wondrous scenery in comfort and style during two days of rail travel in premium SilverLeaf class. After arriving in Moab, delight in guided touring at Arches National Park and Canyonlands National Park for two additional areas to explore.

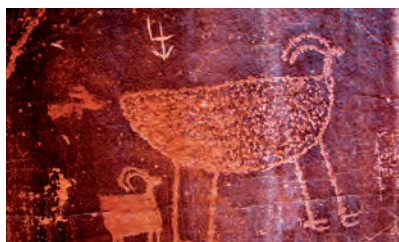
Space is limited. With significant savings of more than \$1,000 per couple, we anticipate this tour will fill quickly, so be certain to reserve your spot today and share this brochure with family and friends who may be interested in traveling with you.

Please reserve online at msu.orbridge.com, by calling (866) 639-0079 or by returning the enclosed reservation form.

Go Green,

Regina Cross
Director, Spartan Pathways Travel Program
MSU Alumni Office
(888) 697-2863

 Orbridge takes seriously the responsibility to minimize our global environmental impact. Each year we plant 100,000 trees in U.S. State Forests with afforestation needs as an ongoing initiative among our evolving sustainability efforts. Learn more at orbridge.com/going-green.



Your 9-Day Itinerary *(subject to change)*

- Day 1:** Arrive in Phoenix, AZ / Scottsdale (D)
Desert Botanical Gardens, welcome dinner
Overnight: Scottsdale Marriott at McDowell Mountains
- Day 2:** Scottsdale / Sedona / Grand Canyon National Park (B)
Lunch at leisure in Sedona, Grand Canyon rim
Overnight: Kachina Lodge
- Day 3:** Grand Canyon National Park (B)
Park touring, optional helicopter flightseeing
Overnight: Kachina Lodge
- Day 4:** Grand Canyon National Park / Monument Valley, UT (B,D)
Park touring, Monument Valley Tour
Overnight: Goulding's Lodge
- Day 5:** Monument Valley / Lake Powell, AZ (B,D)
Navajo National Monument, Antelope Canyon tour, Glen Canyon Dam, leisure time
Overnight: Lake Powell Resort
- Day 6:** Lake Powell / Bryce Canyon National Park, UT (B,L,D)
Glen Canyon float trip, park exploration
Overnight: The Lodge at Bryce Canyon
- Day 7:** Bryce Canyon National Park / Zion National Park (B)
Zion park trails and exploration
Overnight: Zion Park Lodge
- Day 8:** Zion National Park / Las Vegas, NV (B,R)
Morning hike, leisure time in Las Vegas, farewell reception
Overnight: The Westin Las Vegas Hotel & Spa
- Day 9:** Depart Las Vegas (B)

(B = Breakfast, L = Lunch, D = Dinner, R = Reception)

Activity Level: Guests should be able to enjoy a mile of outdoor walking at a moderate pace, be sure-footed on uneven ground, get in and out of a motor coach, and manage stairs without assistance.





Uncover

- Explore the Southwest's natural wonders with a knowledgeable Orbridge Expedition Leader.
- Spend additional time in Grand Canyon National Park or choose to join an optional helicopter flightseeing excursion over the Grand Canyon (additional fee).
- Discover the sunbaked natural structures and sacred lands of Monument Valley.
- Witness the towering red rock cliffs lining the Colorado River during a rafting excursion in Glen Canyon.
- Behold the radiant colors and fluid-like patterns inside the walls of Antelope Canyon.
- Observe the monolithic hoodoos in Bryce Canyon National Park.

Engage

- Visit a traditional Navajo hogan, and set out on a four-wheel drive tour through Monument Valley.
- Follow the paths of Ancestral Puebloans and pioneers at Zion National Park.

Repose

- Stay at lodges inside Grand Canyon National Park and other properties carefully selected for their rich histories, beautiful locations, and superb service and accommodations.

What's Included

- 8 nights accommodations
- A welcome and farewell reception, 8 breakfasts, 1 lunch, and 4 dinners
- Full guiding services of an Orbridge Expedition Leader as well as expert local guides
- Admission and park fees throughout
- All activities as described in the 9-day itinerary, unless noted otherwise
- Private deluxe motor coach with air conditioning and comfortable seating
- Luggage portage
- Gratuities to Orbridge Expedition Leader, local guides, drivers, and porters
- Airport transfers for guests arriving and departing during the suggested times



Orbridge

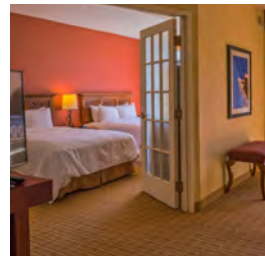
Your Expedition Leader:

The company and keen eyes of an expert Orbridge Expedition Leader will make all the difference in your educational experience. Enriched by their wealth of expertise, you'll bring home a deeper understanding of the flora, fauna, natural history, and cultural narrative of the diverse parks of the American Southwest.

Accommodations (subject to change)

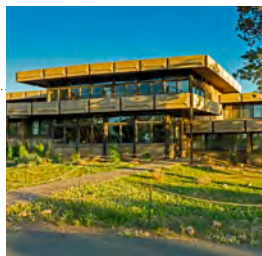
SCOTTSDALE MARRIOTT AT MCDOWELL MOUNTAINS

Delight in the well-appointed comforts of this modern hotel, featuring breathtaking mountain views. Cool off in the outdoor pool, take advantage of the fitness center, or relax outside on the picturesque patio.



KACHINA LODGE

Contemporary Kachina Lodge sits on the rim of the Grand Canyon. Guest rooms feature a comfortable, modern ambiance, and the property is within walking distance to restaurants and gift shops.



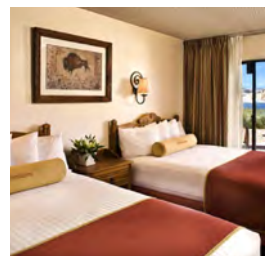
GOULDING'S LODGE

Relax and savor the spectacular views of Monument Valley at Goulding's Lodge, a famous locale for Old West movies. Stop by the Trading Post Museum to view the artifacts, artwork, and film memorabilia.



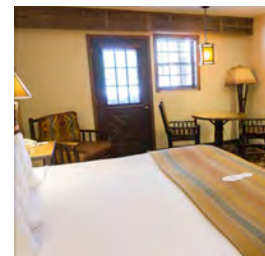
LAKE POWELL RESORT

Located in Page, Arizona, the Lake Powell Resort offers comfortable lodging and first-rate dining. The property's lake view rooms with Native American flair are an ideal retreat after a day full of adventurous fun. Sit back and take in views of Wahweap Bay, Lone Rock, Castle Rock, and breathtaking sunsets.



THE LODGE AT BRYCE CANYON

Situated just steps away from the rim of Bryce Canyon National Park, this property's recently remodeled rooms provide contemporary comforts in combination with an authentic western park experience. Wi-Fi is complimentary in the main lodge.



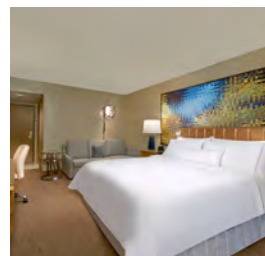
ZION PARK LODGE

The only in-park lodging at Zion National Park, the Zion Park Lodge is serenely nestled among towering red rock cliffs. Each guest room provides a warm, comfortable atmosphere, ensuring a memorable stay.



THE WESTIN LAS VEGAS HOTEL & SPA

Welcome to the City of Lights! This stylish hotel—just off the Las Vegas Strip—features a 100% non-smoking environment, modern guest rooms, outdoor heated pool, fitness studio, lobby lounge, and 24-hour bistro.



Optional Pre-Tour
Denver to Moab
Aboard *Rocky Mountaineer*



Travel by rail between the mile-high city of Denver to the red rock formations of Moab by joining a luxury train journey to America's Southwest—a region steeped in history and full of opportunities to explore. Oversized windows and glass-domed coaches allow you to relax and soak in the magnificent scenery that includes colorful deserts, bewitching hoodoos, and natural archways.

Pre-Tour Itinerary (subject to change)

Day +1: Arrive in Denver, CO

Leisure time at the hotel

Overnight: Magnolia Denver Hotel

Day +2: Denver / *Rocky Mountaineer* / Glenwood Springs (B,I)

Ruby Canyon, Mount Logan, cross the Continental Divide, Byers Canyon, Gore Canyon, evening at leisure

Overnight: Glenwood Springs Lodging

Day +3: Glenwood Springs / *Rocky Mountaineer* / Moab, UT / Canyonlands National Park (B)

Parachute Creek, Mount Logan, Colorado River

Overnight: Red Cliffs Lodge

Day +4: Moab / Arches National Park / Moab (B)

Park exploration, guided touring

Overnight: Red Cliffs Lodge

Day +5: Moab / Grand Junction / Flight to

Phoenix, AZ / Main Program Begins (B)

What's Included

- 1 night accommodations at Magnolia Denver Hotel (or similar) in Denver
- 1 night accommodations in Glenwood Springs (hotel determined by *Rocky Mountaineer*)
- 2 nights accommodations at Red Cliffs Lodge (or similar)
- 4 breakfasts and 1 lunch
- *Rocky Mountaineer* rail transport with SilverLeaf or SilverLeaf Plus Service
- Guiding services of a local guide
- Admission to Arches, and Canyonlands National Parks, included guided touring
- Private transportation for included park activities
- Gratuities to *Rocky Mountaineer* staff, local guides, drivers, and porters
- Internal airfare from Grand Junction to Phoenix
- Airport transfers for guests arriving during the suggested times

SilverLeaf Service Includes:

- Custom-designed single-level dome car, featuring oversized windows
- Reclining, comfortable pre-assigned seating with ample leg room
- Exclusive access to a small, private outdoor viewing area
- Unlimited beverages (including beer, wine, and spirits)
- À la carte meal service with gourmet meals that feature locally sourced ingredients prepared by an onboard culinary team

SilverLeaf Plus Service Includes:

Includes all the benefits of SilverLeaf Service plus exclusive access to the newly renovated lounge car. Featuring signature cocktails, the lounge car offers additional space indoors to relax and soak in the scenery, as well as a small outdoor viewing area. Also, enjoy an elevated dining experience with an additional course during select meals, and premium alcoholic beverages.

Southwest National Parks

OCTOBER 16-24, 2024

Pre-Tour: October 12-16, 2024

Denver to Moab Aboard Rocky Mountaineer

Category	Standard Rate	Special Rate*
Double	\$5,499	\$4,995
Single	\$7,199	\$6,695
Denver to Moab Pre-Tour*		
Category	Standard Rate	Special Rate*
SilverLeaf	\$3,899	\$3,695
SilverLeaf Plus	\$4,699	\$4,495
SilverLeaf Single	\$5,699	\$5,495
SilverLeaf Plus Single	\$6,499	\$6,295

Reserve by Credit Card:

Online: msu.orbridge.com

Phone: (866) 639-0079

Fax: (206) 452-5655

Reserve by Check:

Made payable to **Orbridge, LLC**

Mail to: Orbridge, P.O. Box 1376

Poulsbo, WA 98370

We strongly suggest purchasing travel insurance. Travel insurance information will be sent to you with your email confirmation from the MSU Alumni Office. For more information, contact Orbridge at (866) 639-0079 or you may call the MSU Alumni Office at (888) 697-2863.

GUEST INFORMATION:

Guest #1 Name (Title/Salutation): _____

Email: _____ Class Year: _____

Home Phone: _____ Alt. Phone: _____

Address: _____

City: _____ State: _____ Zip: _____

Guest #2 Name (Title/Salutation): _____

Email: _____ Class Year: _____

Home Phone: _____ Alt. Phone: _____

DEPOSIT PAYMENT:

Check ACH (Automated Clearing House) MasterCard/Visa American Express Discover

Card #: _____ Exp. Date: _____ CW: _____

Name (as printed on card): _____

Billing Address (if different from above): _____

City: _____ State: _____ Zip: _____

DEPOSIT:

_____ guests joining pre-tour (\$500/person) +

_____ guests joining program (\$850/person) = **TOTAL DEPOSIT: \$** _____

OPTIONAL GRAND CANYON HELICOPTER EXCURSION (added to your final invoice):

_____ guests joining optional excursion (\$339/person)

Participants' dressed weight: Guest #1 _____ Guest #2 _____ (for flights only; to balance the aircraft)

I/we have read, understand, and agree to the full Terms & Conditions at terms.orbridge.com; and I/we agree that Orbridge, LLC is authorized to charge my credit card above and/or take my/our deposit for this program.

Signature: _____ Date: _____

Reservations, Deposits and Final Payment. To secure your reservation, deposits are due upon placing a reservation as follows: \$850 per person per program and \$500 per person for any pre/post-tour. Orbridge accepts payment by check, ACH, wire or major credit card. Final payment is due 90 days prior to the departure date. Reservations made after the final payment due date are due at the time of registration. If final payment is not received by Orbridge by the final payment due date, Orbridge may cancel your reservation in its sole discretion with no right of refund. CST#2098750-40 WST#602828994

Reservation Grace Period. Reservations made 121+ days prior to the departure date may be cancelled within 30 days from the reservation date ("Grace Period") for a full refund. Notice of cancellation must be received in writing during the Grace Period. The date of receipt will be used for the effective date.

Reservation Cancellations and Refunds. Notice of cancellation must be submitted to Orbridge in writing. The date of receipt will be used for the effective date. If the cancellation notice is received after the Grace Period (if applicable): (a) 91+ days prior to the departure date, all monies paid will be refunded less an administrative fee of \$350 per person for the main program and \$200 per person for a pre/post-tour; (b) 90-76 days prior to the departure date, a 25% cancellation fee for the full cost of the program and the balance will be refunded; (c) 75-61 days prior to the departure date, a 50% cancellation fee for the full cost of the program and the balance will be refunded; (d) 60-46 days prior to the departure date, a 75% cancellation fee for the full cost of the program and the balance will be refunded; (e) within 45 days prior to the departure date, a 100% cancellation fee for the full cost of the program. A 100% cancellation fee applies to all non-refundable airfare. Refunds, if any, will be processed within 30 days of our receipt of your written notice.

For complete Terms & Conditions, visit terms.orbridge.com | Copyright © 2023 Orbridge, LLC | orbridge.com | (866) 639-0079

*Special group rate; limited offer. Rates are per person based on double occupancy except where noted as Single, in U.S. dollars. Airfare not included. Single availability limited. For the pre-tour, internal airfare from Grand Junction to Phoenix is included. Airfare otherwise not included. **A complement to the educational component of this journey, Expedition Libraries are curated collections of useful resources and background reading tailored to this program. Place your deposit on or before the specified date, and one Expedition Library per household will be sent after receipt of final payment. Libraries may be purchased; please call for details.



CUT HERE

Southwest National Parks

OCTOBER 16-24, 2024

Special Alumni Rate: **Save more than \$1,000**
per couple

Michigan State University Alumni Office Spartan Pathways Disclaimer:

The Michigan State University Alumni Office (the MSU Alumni Office or MSUAO) and the Spartan Pathways Travel Program is not the Tour Operator. The MSUAO is not responsible for the changes of flight times, fare changes, dishonor of airline, hotel or motor coach transportation and car rental reservations, delays, losses, injuries, inconveniences, cessation of operations, airline or tour operator bankruptcies, acts of God, or any other event beyond our control. The MSUAO acts only as a sponsor with respect to the travel services, and it shall not be responsible for changes to flight times, fare changes, dishonor of airline, hotel or other reservations, injury, damage, loss of baggage, accidents or for the acts or defaults of any person or entity engaged in providing services to participants or in carrying out other arrangements of the tour. Further, the MSUAO shall not be responsible for losses or additional expenses of the participant due to sickness, weather, strike, civil unrest, acts of terrorism, pandemic, epidemic, quarantine, acts of God, governmental intervention, or other causes beyond its control. The MSUAO shall not be responsible for alteration in the itinerary as deemed necessary for carrying out the tour and the Tour Operator may substitute hotels of similar quality. The Tour Operator may postpone or cancel any tour prior to departure. The MSUAO or the Tour Operator may decline to accept or to retain any person as a member of the tour should such person's physical or mental health, actions or general deportment impede the operation of the tour or the rights or welfare of the other participants. No refund will be made for the unused portion of any tour. By embarking upon travel, the participant voluntarily assumes all risk involved in such travel, whether expected or unexpected. Participant is hereby warned of the above risks as well as possible travel industry force majeure, bankruptcies and medical and climatic disruptions, and the possibility participant may be unable to travel as scheduled because of personal emergency. Participant is advised to consider obtaining appropriate insurance coverage against these risks. Applicants for participation on this tour accept in full all the conditions set forth above. The MSUAO partners with other universities and alumni from other universities will be on many departures. While some of the Spartan Pathway's tours are exclusive to just MSU alumni, on many of the tours we partner with other universities/organizations that have travel programs. Space allotments for these tours are given to each university and after a guaranteed time allotted for reservations, available space is opened to all universities/organizations. Therefore, some departures may have universities with greater numbers of alumni on the tour than MSU.

MICHSTSWP24.2

FREE Expedition Library
AN EXCLUSIVE EARLY
RESERVATION BONUS

Reserve your space by

July 26, 2024

to receive the FREE Orbridge Expedition
Library we've assembled for this program.**



MSU Alumni Office
535 Chestnut Road, Room 300
East Lansing, MI 48824-2005

PRSRT STD
U.S. POSTAGE
PAID
PERMIT NO. 825
SAN DIEGO, CA