



SPARTAN
PATHWAYS TRAVEL
MICHIGAN STATE UNIVERSITY ALUMNI

OCTOBER 11-25, 2024

with optional
VARANASI POST-TOUR

INTRIGUING *India*

**BOOK WITH
CONFIDENCE**

30-day refund
guarantee

WONDROUS CULTURES AND WILDLIFE



Dear Spartans,

Take part in this unforgettable immersion into the rich and exotic depths of India's history, traditions, and nature—where thousands of years of civilization, contemporary locals, skilled artisans, and an abundance of intriguing wildlife fuse together on one incredible subcontinent.

This multifaceted journey to the Golden Triangle and beyond will transport you through the rise and fall of empires and dynasties while surveying the architectural grandeur that reflects the history, culture, and religions of an amazing past. Visit a variety of significant structures with “bucket list” appeal, including the UNESCO World Heritage Sites of Humayun's Tomb, the Taj Mahal, Amer Fort, Agra Fort, and Hawa Mahal.

Experience a colorful mosaic of Indian life in this expertly curated adventure with an invigorating rickshaw ride through Delhi, engaging village visits, and special opportunities to meet with artisans to discover their living traditions. Watch the craft of marble inlay, learn how gems are processed into jewelry, and browse handmade goods at various vibrant markets.


No in-depth exploration of India would be complete without nature and wildlife. This robust itinerary features a visit to one of the most spectacular water bird sanctuaries in the world—Keoladeo National Park—plus extended time at Ranthambhore National Park for a pulse-racing chance to spot diverse wildlife including elusive tigers, among the endless, breathtaking scenery.

Space is limited. With significant savings of more than \$1,000 per couple, we anticipate this tour will fill quickly, so be sure to reserve your spot today and share this brochure with family and friends who may be interested in traveling with you.

Please reserve online at msu.orbridge.com, by calling (866) 639-0079 or by returning the enclosed reservation form.

Go Green,

Regina Cross
Director, Spartan Pathways Travel Program
MSU Alumni Office
(888) 697-2863

 Orbridge takes seriously the responsibility to minimize our global environmental impact. Each year we plant 100,000 trees in U.S. State Forests with afforestation needs as an ongoing initiative among our evolving sustainability efforts. Learn more at orbridge.com/going-green.



Your 15-Day Itinerary *(subject to change)*

Day 1: En route from U.S.

Day 2: Arrive in Delhi, India
Overnight: The Imperial

Day 3: Old Delhi / New Delhi (B,D)
Panoramic city tour, Chandni Chowk,
rickshaw ride, art historian presentation
Overnight: The Imperial

Day 4: Delhi / Agra (B,L,D)
Taj Mahal visit at sunset
Overnight: Jaypee Palace

Day 5: Agra (B,L)
Taj Mahal visit at sunrise, Agra Fort,
artisan marble workshop, Wildlife S.O.S.
sanctuary visit
Overnight: Jaypee Palace

Day 6: Agra / Bharatpur (B,L,D)
Bharatpur village visit, dance
performance
Overnight: The Bagh

Day 7: Bharatpur / Ranthambhore (B,L,D)
Keoladeo Bird Sanctuary, cooking
demonstration
Overnight: Ranthambhore Kothi

Day 8: Ranthambhore (B,L,D)
Wildlife game drive, village visit
Overnight: Ranthambhore Kothi

Day 9: Ranthambhore / Jaipur (B,L,D)
Morning game drive
Overnight: Jai Mahal Palace

Day 10: Jaipur (B)
Amer Fort, Hawa Mahal
Overnight: Jai Mahal Palace

Day 11: Jaipur (B,L)
City Palace, observatory, artisan
gem workshop, bazaar, puppet show
Overnight: Jai Mahal Palace

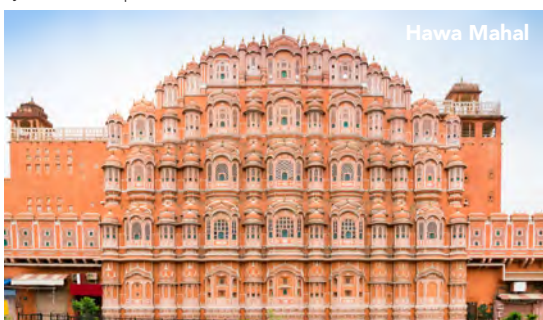
Day 12: Jaipur / Flight to Udaipur (B,L)
Leisure time, optional yoga experience
Overnight: Taj Lake Palace

Day 13: Udaipur (B,D)
City Palace, Lake Pichola boat ride
Overnight: Taj Lake Palace

Day 14: Udaipur / Flight to Delhi /
Depart for U.S. (B,L,D)
Leisure time before late evening flights
Day Room: Radisson Blu Plaza Delhi Airport

Day 15: En route to U.S.
(B = Breakfast, L = Lunch, D = Dinner)

Activity Level: Activities are generally not very strenuous, but a considerable amount of walking can be expected. It is our expectation that guests on this program are able to follow a guide at an average pace for three hours through paved and unpaved streets, over even and uneven terrain, and up and down stairs without assistance. Due to the nature of some structures, handrails may not be present, and facilities for people with disabilities may be limited. Participation in itinerary activities is up to the individual.





Explore

- Survey the contrasts between Old and New Delhi with sightseeing and an informative talk by an art historian during a guided tour of the capital.
- Travel to Agra to see the colors of sunrise and sunset paint the ivory-white mausoleum Taj Mahal, and visit an artisan workshop to learn about the tradition of its handcrafted marble inlay.
- Discover the 16th-century Agra Fort—a colossal, red sandstone and marble complex of palaces, mosques, and courtyards, which was the main residence of the Mughal emperors in the former capital.
- Delight in a performance of Raas Leela—an Indian dance traced back to sacred Hindu writings.
- Explore Keoladeo National Park, a UNESCO World Heritage Site, where nearly 400 species of birds have been recorded, including the rare Siberian crane.

Engage

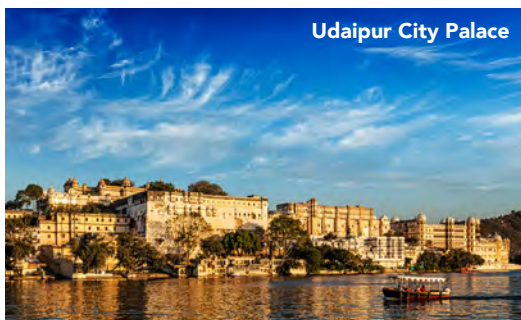
- Enjoy a variety of activities imparting authentic cultural immersion, including a cooking demonstration, puppet show, and yoga session.
- Watch for chances to spot a Jungle Book of creatures at Ranthambhore National Park. Tigers, desert fox, jackal, mongoose, sloth bear, and even 50 species of butterflies are found here.
- Journey to Jaipur, the “Pink City” renowned for sensational shopping and the architectural treasures of Hawa Mahal, Amer Fort, and the City Palace. Drop into an artisan’s workshop to see how gems from all over the world are processed into jewelry by the city’s famed artisans.

Admire

- In picturesque Udaipur, tour the magnificent City Palace—the largest palace complex in Rajasthan, which includes a museum housing a myriad of historical artifacts and royal memorabilia.
- Experience a once-in-a-lifetime stay at the legendary Taj Lake Palace, an 18th-century royal summer palace constructed from white marble on an island in Lake Pichola.

What’s Included

- 12 nights hotel accommodations and a day room on departure day
- 12 breakfasts, 9 lunches, and 8 dinners
- Full guiding services of an Orbridge Travel Director and expert local guides
- Private motor coach transportation
- Admission to all locations listed on the 15-day itinerary
- Internal airfare from Jaipur to Udaipur and from Udaipur to Delhi
- Luggage portering
- Gratuities to Orbridge Travel Director, local guides, drivers, porters, and wait staff for included meals
- Airport transfers for guests arriving and departing during the suggested times



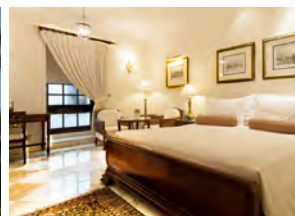


Amer Fort

Accommodations (subject to change)

THE IMPERIAL

Situated on a plush, manicured landscape spread over eight acres, The Imperial is a welcoming oasis amid the intensity of Delhi, and is arguably one of the finest hotels in Asia.



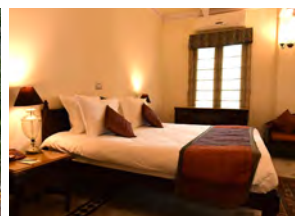
JAYPEE PALACE

Built of red sandstone and white marble in the style of Mughal architecture, the Jaypee Palace in Agra welcomes guests with ornate, well-appointed rooms, landscaped gardens, specialty restaurants, and unique leisure options, including shopping, squash, and bowling.



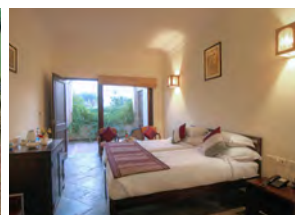
THE BAGH

Delight in the property's modern comforts blended seamlessly with the surrounding flora and fauna, providing a relaxing retreat after an adventurous day.



RANTHAMBHORE KOTHI

Close to Ranthambhore Park, Ranthambhore Kothi is built in the style of British bungalows, offering spacious rooms, green gardens, welcoming staff, and delicious cuisine. During leisure time, stroll the surrounding blooming forest, take a dip in the outdoor pool, or visit the full-service spa (additional fees apply).



JAI MAHAL PALACE

Built in 1745, the Jai Mahal Palace is a stunning piece of Rajasthan's heritage set amidst 18 acres of landscaped gardens. This award-winning property has been the residence of three Prime Ministers of Jaipur and features 94 restored rooms and six suites with modern-day comforts.



TAJ LAKE PALACE

The 18th-century whitewashed Taj Lake Palace rests in the middle of Lake Pichola, offering 360-degree views of surrounding Udaipur. Some may recognize this property from one of the James Bond films.



Optional Post-Tour Varanasi



Varanasi

Don't miss the opportunity to explore one of India's most compelling destinations—Varanasi. Famous for its temples, palaces, and shrines (as well as arts, crafts, music, and dance), Varanasi is one of the oldest continuously inhabited places in the world. Perched on the banks of the sacred Ganges River, this colorful city offers an intense and unique glimpse into India's soul. Witness pilgrims gathering at the bathing steps, or ghats, and soak up the sensory-rich atmosphere of devotion.

Post-Tour Itinerary *(subject to change)*

- Day 15:** Delhi / Flight to Varanasi (L,D)
Panoramic city tour, evening aarti at the River Ganges
Overnight: Taj Ganges
- Day 16:** Varanasi / Sarnath / Varanasi (B,L,D)
Ganges boat ride, ghats visit, Buddhist archaeological site, musician home visit and performance
Overnight: Taj Ganges
- Day 17:** Varanasi / Flight to Delhi / Depart for U.S. (B,L,D)
Leisure time, late evening departures
Day Room: Radisson Blu Plaza Delhi Airport
- Day 18:** En route / Arrive in U.S.

What's Included

- 2 nights luxury accommodations at the Taj Ganges (shown below) or similar, and a day room on departure day
- 3 breakfasts, 3 lunches, and 3 dinners
- Admission to all sites listed in the 4-day itinerary
- Touring by an English-speaking guide
- Round-trip airfare between Delhi and Varanasi
- All gratuities and portage
- Airport transfers for guests departing during the suggested times



Intriguing India

OCTOBER 11-25, 2024

Varanasi Post-Tour: October 25-28, 2024

Reserve by Credit Card:

Online: msu.orbridge.com

Phone: (866) 639-0079

Fax: (206) 452-5655

Reserve by Check:

Made payable to **Orbridge, LLC**

Mail to: Orbridge, P.O. Box 1376

Poulsbo, WA 98370

We strongly suggest purchasing travel insurance. Travel insurance information will be sent to you with your email confirmation from the MSU Alumni Office. For more information, contact Orbridge at (866) 639-0079 or you may call the MSU Alumni Office at (888) 697-2863.

GUEST INFORMATION:

Guest #1 Name (Title/Salutation): _____

Email: _____ Class Year: _____

Home Phone: _____ Alt. Phone: _____

Address: _____

City: _____ State: _____ Zip: _____

Guest #2 Name (Title/Salutation): _____

Email: _____ Class Year: _____

Home Phone: _____ Alt. Phone: _____

DEPOSIT PAYMENT:

☐ Check ☐ ACH (Automated Clearing House) ☐ MasterCard/Visa ☐ American Express ☐ Discover

Card #: _____ Exp. Date: _____ CVV: _____

Name (as printed on card): _____

Billing Address (if different from above): _____

City: _____ State: _____ Zip: _____

DEPOSIT:

_____ guests joining program (\$850/person) +

_____ guests joining post-tour (\$500/person) = **TOTAL DEPOSIT: \$** _____

I/we have read, understand, and agree to the full Terms & Conditions at terms.orbridge.com; and I/we agree that Orbridge, LLC is authorized to charge my credit card above and/or take my/our deposit for this program.

Signature: _____ Date: _____

Reservations, Deposits and Final Payment. To secure your reservation, deposits are due upon placing a reservation as follows: \$850 per person per program and \$500 per person for any pre/post-tour. Orbridge accepts payment by check, ACH, wire or major credit card. Final payment is due 90 days prior to the departure date. Reservations made after the final payment due date are due at the time of registration. If final payment is not received by Orbridge by the final payment due date, Orbridge may cancel your reservation in its sole discretion with no right of refund. CST#2098750-40 WST#602828994

Reservation Grace Period. Reservations made 121+ days prior to the departure date may be cancelled within 30 days from the reservation date ("Grace Period") for a full refund. Notice of cancellation must be received in writing during the Grace Period. The date of receipt will be used for the effective date.

Reservation Cancellations and Refunds. Notice of cancellation must be submitted to Orbridge in writing. The date of receipt will be used for the effective date. If the cancellation notice is received after the Grace Period (if applicable): (a) 91+ days prior to the departure date, all monies paid will be refunded less an administrative fee of \$350 per person for the main program and \$200 per person for a pre/post-tour; (b) 90-76 days prior to the departure date, a 25% cancellation fee for the full cost of the program and the balance will be refunded; (c) 75-61 days prior to the departure date, a 50% cancellation fee for the full cost of the program and the balance will be refunded; (d) 60-46 days prior to the departure date, a 75% cancellation fee for the full cost of the program and the balance will be refunded; (e) within 45 days prior to the departure date, a 100% cancellation fee for the full cost of the program. A 100% cancellation fee applies to all non-refundable airfare. Refunds, if any, will be processed within 30 days of our receipt of your written notice.

For complete Terms & Conditions, visit terms.orbridge.com | Copyright © 2023 Orbridge, LLC | orbridge.com | (866) 639-0079

*Special group rates; limited offer. Rates are per person based on double occupancy except where noted as Single, in U.S. dollars. Single availability limited. Internal airfare between Jaipur, Udaipur, and Delhi is included. Airfare otherwise not included. For the Post-Tour, round-trip airfare between Delhi and Varanasi is included. Airfare otherwise not included. **A complement to the educational component of this journey, Expedition Libraries are curated collections of useful resources and background reading tailored to this program. Place your deposit on or before the specified date, and one Expedition Library per household will be sent after receipt of final payment. Libraries may be purchased; please call for details.





Michigan State University Alumni Office Spartan Pathways Disclaimer:

The Michigan State University Alumni Office (the MSU Alumni Office or MSUAO) and the Spartan Pathways Travel Program is not the Tour Operator. The MSUAO is not responsible for the changes of flight times, fare changes, dishonor of airline, hotel or motor coach transportation and car rental reservations, delays, losses, injuries, inconveniences, cessation of operations, airline or tour operator bankruptcies, acts of God, or any other event beyond our control. The MSUAO acts only as a sponsor with respect to the travel services, and it shall not be responsible for changes to flight times, fare changes, dishonor of airline, hotel or other reservations, injury, damage, loss of baggage, accidents or for the acts or defaults of any person or entity engaged in providing services to participants or in carrying out other arrangements of the tour. Further, the MSUAO shall not be responsible for losses or additional expenses of the participant due to sickness, weather, strike, civil unrest, acts of terrorism, pandemic, epidemic, quarantine, acts of God, governmental intervention, or other causes beyond its control. The MSUAO shall not be responsible for alteration in the itinerary as deemed necessary for carrying out the tour and the Tour Operator may substitute hotels of similar quality. The Tour Operator may postpone or cancel any tour prior to departure. The MSUAO or the Tour Operator may decline to accept or to retain any person as a member of the tour should such person's physical or mental health, actions or general deportment impede the operation of the tour or the rights or welfare of the other participants. No refund will be made for the unused portion of any tour. By embarking upon travel, the participant voluntarily assumes all risk involved in such travel, whether expected or unexpected. Participant is hereby warned of the above risks as well as possible travel industry force majeure, bankruptcies and medical and climatic disruptions, and the possibility participant may be unable to travel as scheduled because of personal emergency. Participant is advised to consider obtaining appropriate insurance coverage against these risks. Applicants for participation on this tour accept in full all the conditions set forth above. The MSUAO partners with other universities and alumni from other universities will be on many departures. While some of the Spartan Pathway's tours are exclusive to just MSU alumni, on many of the tours we partner with other universities/organizations that have travel programs. Space allotments for these tours are given to each university and after a guaranteed time allotted for reservations, available space is opened to all universities/organizations. Therefore, some departures may have universities with greater numbers of alumni on the tour than MSU.

MICHSTIND.24.2

Intriguing India

OCTOBER 11-25, 2024

Special Alumni Rate: **Save more than \$1,000**
per couple



MSU Alumni Office
535 Chestnut Road, Room 300
East Lansing, MI 48824-2005

PRSRT STD
U.S. POSTAGE
PAID
PERMIT NO. 825
SAN DIEGO, CA

FREE Expedition Library
AN EXCLUSIVE EARLY
RESERVATION BONUS
.....

Reserve your space by

April 12, 2024

to receive the FREE OrBridge Expedition
Library we've assembled for this program.**