

# AFRICAN EXPEDITION

by private train

BOOK WITH  
CONFIDENCE

30-day refund  
guarantee

**TEXAS EXES**  
— FLYING LONGHORNS —

SEPTEMBER 11-25, 2024

with optional  
CAPE TOWN  
PRE-TOUR







Dear Texas Ex,

Join us as we discover quintessential Southern Africa in comfort and style on an epic railroad journey. This 16-day program highlights the region's plentiful assets—impressive wildlife, superb food and drink, friendly people, temperate climate, and rich history through rewarding excursions and transport aboard the private train *African Explorer*.

Take in the panoramas from the window-lined lounge car as we travel through South Africa, Eswatini, Mozambique, and Zimbabwe experiencing delicious three-course dinners, the beauty of the wide-open savanna, and intriguing UNESCO World Heritage sites.

Stops at Kruger National Park, Makalali Game Reserve, and Hwange National Park provide opportunities to encounter members of “the Big 5” and other indigenous wildlife in their natural settings. Enjoy Mediterranean-style architecture in Maputo, a scenic sojourn through the rugged Drakensberg mountain range, archaeological sites in the Great Zimbabwe, and the raw beauty and power of Victoria Falls.

This outstanding itinerary is brought to you by the Texas Exes Flying Longhorns travel program, which supports the association's mission of promoting and protecting The University of Texas at Austin and uniting its alumni around the world. While you do not have to be an alumnus of UT to travel with us, we do ask that all Flying Longhorns travelers have an active membership in the Texas Exes. Memberships start at just \$50.

The association is a huge proponent of continuing education and there is no better classroom than our world. Experience stunning natural beauty and rich culture in the company of your fellow Longhorns! Are you ready for the adventure of a lifetime? We're standing by to answer all of your questions and/or take your reservation. Capacity is limited on this popular program and it may sell out quickly.

To secure your spot, please contact the Flying Longhorns travel office at 800-594-3900 or [travel@texasexes.org](mailto:travel@texasexes.org) with questions or to make a reservation. Or you may fax the reservation form to us at 512-672-6134.

Best regards,

Your Flying Longhorns Travel Team:  
Margaret, Janice, and Leslie

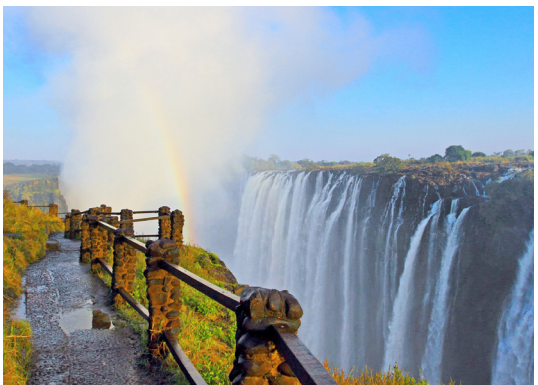
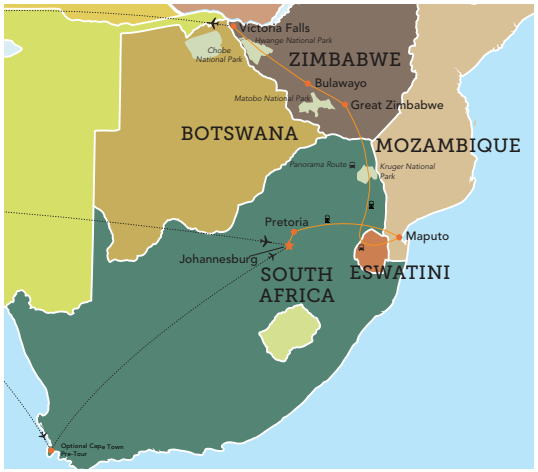
.....  
Orbridge takes seriously the responsibility to minimize our global environmental impact. Each year we plant 100,000 trees in U.S. State Forests with afforestation needs as an ongoing initiative among our evolving sustainability efforts. Learn more at [orbridge.com/going-green](http://orbridge.com/going-green).



# Your 16-Day Itinerary (subject to change)

- Day 1:** En Route from U.S.
- Day 2:** Arrive in Johannesburg, South Africa / Pretoria  
Welcome beverage, evening at leisure  
Overnight: DaVinci Hotel and Suites
- Day 3:** Pretoria (B,D)  
Embarkation and dinner  
Overnight: *African Explorer*
- Day 4:** Full day aboard train (B,L,D)
- Day 5:** Kingdom of Eswatini (B,D)  
Ezulwini valley, Mbabane, Pigg's Peak, local craft markets  
Overnight: *African Explorer*
- Day 6:** Maputo, Mozambique (B,L,D)  
Panoramic bus tour, botanical gardens, Maputo Bay Market  
Overnight: *African Explorer*
- Day 7:** Kruger National Park (B,L,D)  
Full-day safari and game sighting, bush dinner  
Overnight: Kruger Gate Hotel
- Day 8:** Drakensberg Mountains (B,D)  
Morning game drive, bus transport through Bylde River Canyon  
Overnight: *African Explorer*
- Day 9:** Makalali Game Reserve (B,L,D)  
Morning safari, afternoon at leisure  
Overnight: *African Explorer*
- Day 10:** Travel Day to Zimbabwe (B,L,D)  
Journey through Beitbridge and the Soutpansberg Mountains, biltong tasting  
Overnight: *African Explorer*
- Day 11:** Great Zimbabwe (B,D)  
City bus excursion and ruins touring  
Overnight: *African Explorer*
- Day 12:** Matobo National Park / Bulawayo (B,D)  
Matobo Hills, rock art sites, Cecil Rhodes' Grave  
Overnight: *African Explorer*
- Day 13:** Hwange National Park (B,L,D)  
Full-day park safari and exploration  
Overnight: *African Explorer*
- Day 14:** Victoria Falls, Zambia (B,D)  
Leisure time to enjoy the falls and the Zambezi River boat tour, farewell dinner  
Overnight: Victoria Falls Safari Lodge
- Day 15:** Victoria Falls / Depart for U.S. (B)
- Day 16:** En Route / Arrive in U.S.

**Activity Level:** This safari program requires an ability to board and disembark a train as well as walk safely over uneven and slippery ground without assistance, transport luggage a short distance, get in and out of a 4x4 vehicle, and physically tolerate vehicle motion on sometimes bumpy roads.





## Relax

- Travel in style aboard the *African Explorer* as you follow unique routing through South Africa, Eswatini, Mozambique, and Zimbabwe.

## Discover

- Admire the magnificent views from Pretoria, South Africa's capital city.
- Discover stunning wildlife while on an extensive safari through Kruger National Park.
- Enjoy the Panorama Route as you travel through the rugged Drakensberg mountain range. This legendary route winds along the steeply sloping Drakensberg escarpment, offering spectacular views across the plains of the Lowveld, more than 3,000 feet below.
- Spot for members of The Big Five during a safari at Makalali Game Reserve.

## Admire

- At Zambezi National Park, explore the Zambezi River by boat with the chance of viewing elephants and hippos from up close.
- Visit Matobo National Park, a UNESCO World Heritage Site, to view the grave of Cecil Rhodes, who founded the colonial territory of Rhodesia, today's Zimbabwe.
- Set out for a full day safari at Hwange National Park, Zimbabwe's largest and most important game reserve, renowned for its herds of elephants and Cape buffalo.

## What's Included

- 10 nights accommodations aboard the *African Explorer* train, plus one night each of deluxe lodging at Pretoria, Kruger National Park, and Victoria Falls
- 13 breakfasts, 6 lunches, and 12 dinners (including a welcome drink and farewell dinner)
- Expert naturalist guides throughout, with an Orbridge Expedition Leader and physician
- Gratuities for Orbridge Expedition Leader, onboard guides, drivers, porters, attendants, and wait staff for included meals
- Transfer and excursion transportation aboard air conditioned buses
- All excursions described in the itinerary, including admission and park fees
- Airport transfers for guests arriving and departing during the suggested times





# African Explorer

Evenings include three-course dinners, featuring African and European culinary specialties, in one of two air conditioned dining cars. In the bar car, relax with a cool Windhoek lager or one of South Africa's famous wines, listen to presentations given by your tour guide, enjoy a good read or have a stimulating conversation with fellow travelers.

Take advantage of the open observation platform with uninterrupted views of passing wilderness, facilitating not only sightings of rare animals, but also opportunities to take amazing photographs.

*NOTE: There is no internet access on the train.*

## CAR & COMPARTMENT DETAILS

Each compartment features: Private bathroom with shower, windows that open (equipped with blinds and sunshades), individual air-conditioning control, 220/230V electricity sockets, safe, closet, bedside cabinets, hairdryer, towels and toiletries, one complimentary bottle of water daily.

**Elephant:** approx. 75 sq. ft. accommodating two guests in either two single beds or one double bed

**Leopard:** approx. 107 sq. ft. accommodating two guests in either two single beds or one double bed

Note: single travelers can select from any category

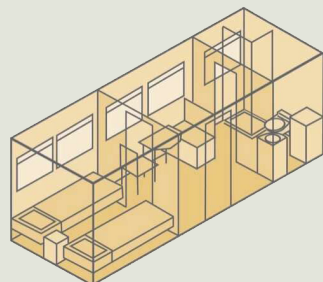
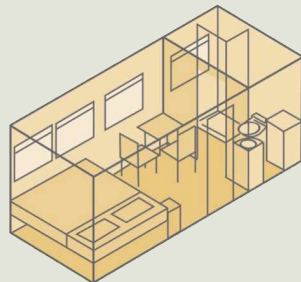
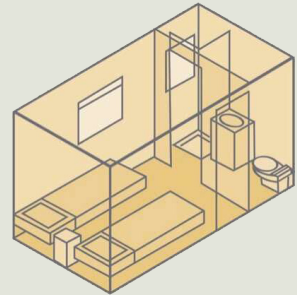
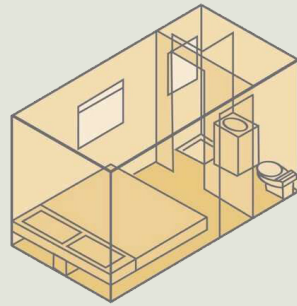
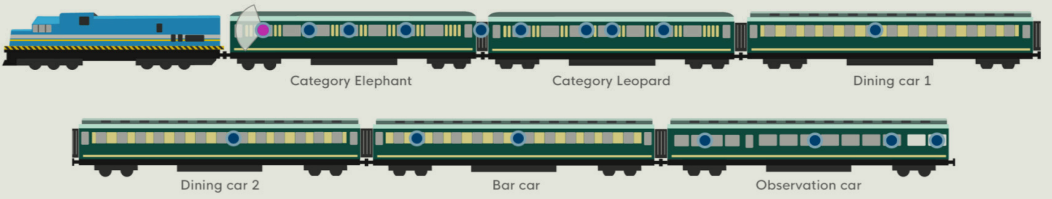




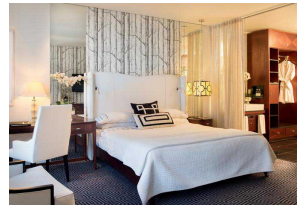


Photo: Dennis Schmeier



## Hotel Accommodations (subject to change)

**DAVINCI HOTEL AND SUITES** .....  
 Ideally situated adjacent to Nelson Mandela Square, this property features a private art collection, elegant dining options, an outdoor infinity pool, and quick access to a luxury shopping center.



**KRUGER GATE HOTEL** .....  
 Enjoy elegant accommodations with uninterrupted views over the Sabie River into Kruger National Park. This lodge-style property is famed for its soaring wooden walkways and treetop ambiance.



**VICTORIA FALLS SAFARI LODGE** .....  
 On a plateau overlooking the Zambezi National Park, Victoria Falls Safari Lodge is renowned for its views of a wildlife-rich waterhole visited by herds of elephant, buffalo, and kudu.





## Optional Pre-Tour Cape Town



Exquisite scenery, intriguing history, and world-class dining beckons travelers to the most cosmopolitan city in South Africa—Cape Town. At the southernmost tip of Africa, separated from the rest of the continent by a ring of mountains, this city hosts a variety of cultures. Gain an appreciation for the vibrant Cape Town of today by peering into its tumultuous past.

### Pre-Tour Itinerary *(subject to change)*

**Day +1:** En Route from U.S.

**Day +2:** Arrive in Cape Town, South Africa  
Enjoy welcome drink and unwind during an evening at leisure  
Overnight: Mount Nelson Hotel by Belmond

**Day +3:** Cape Town (B,L)  
Panoramic city tour, cable car ride,  
Company's Garden, Greenmarket Square,  
Malay Quarter, food and wine tasting,  
evening at leisure  
Overnight: Mount Nelson Hotel by Belmond

**Day +4:** Cape Town (B,L)  
Half-day private guided tour of Robben Island  
Overnight: Mount Nelson Hotel by Belmond

**Day +5:** Cape Town / Flight to  
Johannesburg / Main Program  
Begins (B)



### What's Included

- 3 nights accommodations at Mount Nelson Hotel by Belmond (or similar)
- 3 breakfasts and 2 lunches
- Guided tours, plus cable car and ferry rides
- Local market experience and wine tasting at an estate
- Flight from Cape Town to Johannesburg
- Transportation for included activities
- Luggage portage
- Gratuities to local guide, driver, porters, hotel staff, and wait staff for included meals
- Airport transfers for guests arriving during the suggested times





# African Expedition by Private Train

SEPTEMBER 11-25, 2024

Cape Town Pre-Tour: September 8-11, 2024

To secure your spot, please contact the Flying Longhorns travel office at 800-594-3900 or travel@texasexes.org with questions or to make your reservation. Or you may fax the reservation form to us at 512-672-6134.

Additional information about Flying Longhorns trips may be found at travel.texasexes.org

## GUEST INFORMATION:

Guest #1 Name (Title/Salutation): \_\_\_\_\_

Guest #1 Name (as preferred on badge): \_\_\_\_\_

Email: \_\_\_\_\_ D.O.B.: \_\_\_\_\_

Home Phone: \_\_\_\_\_ Alt. Phone: \_\_\_\_\_

Address: \_\_\_\_\_

City: \_\_\_\_\_ State: \_\_\_\_\_ Zip: \_\_\_\_\_

Guest #2 Name (Title/Salutation): \_\_\_\_\_

Guest #2 Name (as preferred on badge): \_\_\_\_\_

Email: \_\_\_\_\_ D.O.B.: \_\_\_\_\_

Home Phone: \_\_\_\_\_ Alt. Phone: \_\_\_\_\_

## DEPOSIT PAYMENT:

Card Type:  ACH (Automated Clearing House)  MasterCard/Visa  American Express  Discover

Card #: \_\_\_\_\_ Exp. Date: \_\_\_\_\_ CVV: \_\_\_\_\_

Name (as printed on card): \_\_\_\_\_

Billing Address (if different from above): \_\_\_\_\_

City: \_\_\_\_\_ State: \_\_\_\_\_ Zip: \_\_\_\_\_

## CATEGORY SELECTION & DEPOSIT:

Category Preference: 1st choice \_\_\_\_\_ 2nd choice \_\_\_\_\_

# \_\_\_\_\_ guests joining pre-tour (\$500/person) +

# \_\_\_\_\_ guests joining program (\$2,500/person) = **TOTAL DEPOSIT: \$** \_\_\_\_\_

I/we have read, understand, and agree to the full Terms & Conditions at terms.orbridge.com; and I/we agree that Orbridge, LLC is authorized to charge my credit card above and/or take my/our deposit for this program.

Signature: \_\_\_\_\_ Date: \_\_\_\_\_

**Reservations, Deposits and Final Payment.** To secure your reservation, deposits are due upon placing a reservation as follows: \$2,500 per person per program and \$500 per person for any pre/post-tour. Orbridge accepts payment by check, ACH, wire or major credit card. Final payment is due 195 days prior to the departure date. Reservations made after the final payment due date are due at the time of registration. If final payment is not received by the final payment due date, Orbridge may cancel your reservation in its sole discretion with no right of refund. CST#2098750-40 WST#602828994

**Reservation Grace Period.** Reservation Grace Period. Reservations made 226+ days prior to the departure date may be cancelled within 30 days following the reservation date ("Grace Period") for a full refund. Notice of cancellation must be received in writing during the Grace Period. The date of receipt will be used for the effective date.

**Reservation Cancellations and Refunds.** Notice of cancellation must be submitted to Orbridge in writing. The date of receipt will be used for the effective date. If the cancellation notice is received after the Grace Period (if applicable): (a) 196+ days prior to the departure date, all monies will be refunded less an administrative fee of \$950 per person for the main program and \$200 per person for a pre/post-tour; (b) 195-150 days prior to the departure date, a 25% cancellation fee will be applied to the full cost of the program and the balance will be refunded; (c) 149-120 days prior to the departure date, a 50% cancellation fee will be applied to the full cost of the program and the balance will be refunded; (d) within 119 days prior to the departure date, a 100% cancellation fee will be applied to the full cost of the program. A 100% cancellation fee applies to all non-refundable airfare. Refunds, if any, will be processed within 30 days of our receipt of your written notice.

For complete Terms & Conditions, visit terms.orbridge.com | Copyright © 2023 Orbridge, LLC | orbridge.com | (866) 639-0079

\*Special group rate; limited offer. Rates are per person, based on double occupancy except where noted as Single, in U.S. dollars. Single availability limited. Airfare from Cape Town to Johannesburg is included in the pre-tour rate. Airfare otherwise not included. \*\*A complement to the educational component of this journey, Expedition Libraries are curated collections of reading and resources tailored to this program. Place your deposit on or before the specified date, and one Expedition Library per household will be sent upon receipt of final payment. Libraries may be purchased; please call for details.



Category	Standard Rate	Special Rate*
Elephant Double	<del>\$11,499</del>	\$10,995
Leopard Double	<del>\$13,499</del>	\$12,995
Elephant Single	<del>\$15,499</del>	\$14,995
Leopard Single	<del>\$17,499</del>	\$16,995

Cape Town Pre-Tour		
Category	Standard Rate	Special Rate*
Double	<del>\$3,199</del>	\$2,995
Single	<del>\$4,099</del>	\$3,895

Final payment is due 195 days prior to departure, that is, on or before February 29, 2024.



# African Expedition by Private Train

SEPTEMBER 11-25, 2024

Special Alumni Rate: **Save more than \$1,000**  
per couple



Texas Exes  
P.O. Box 7278  
Austin, TX 78713

Membership in The Texas Exes is a requirement for all participants in the Flying Longhorns travel program. Alumni, friends of the University, UT faculty and staff, and parents of current UT students are welcome to join. Our dues are 80% tax-deductible and memberships start at just \$50.

UTEXAET242

**FREE Expedition Library**  
AN EXCLUSIVE EARLY  
RESERVATION BONUS

Reserve your space by  
**January 26, 2024**

to receive the FREE Orbridge Expedition Library we've assembled for this program. \*\*

PRSRT STD  
U.S. POSTAGE  
PAID  
PERMIT NO. 825  
SAN DIEGO, CA

