

AFRICAN EXPEDITION

by private train

BOOK WITH
CONFIDENCE

30-day refund
guarantee



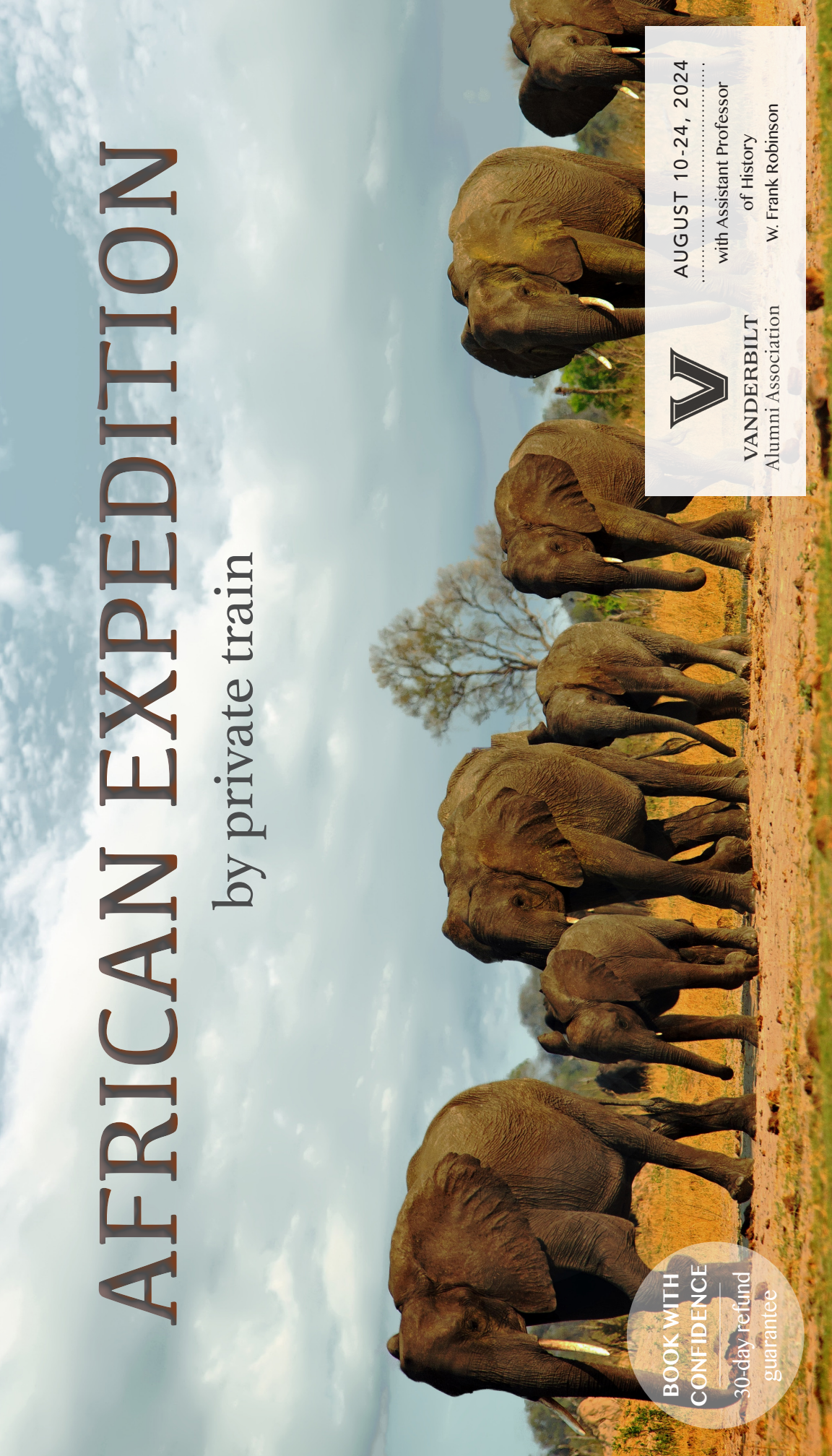
VANDERBILT
Alumni Association

AUGUST 10-24, 2024

with Assistant Professor

of History

W. Frank Robinson





Dear Alumni and Friends,

Join us as we discover quintessential destinations in Southern Africa in comfort and style on an epic railroad journey. This 16-day program highlights the region's plentiful assets—impressive wildlife, superb food and drink, friendly people, temperate climate, and rich history through rewarding excursions and transport aboard the private train *African Explorer*.

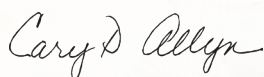
Take in the panoramas from the window-lined lounge car as we travel through South Africa, Eswantini, Mozambique, and Zimbabwe experiencing sumptuous three-course dinners, the beauty of the wide-open savanna, and intriguing UNESCO World Heritage sites.

Stops at Kruger National Park, Makalali Game Reserve, and Hwange National Park provide opportunities to encounter members of “the Big 5” and other indigenous wildlife in their natural settings. Enjoy Mediterranean-style architecture in Maputo, a scenic sojourn through the rugged Drakensberg mountain range, archaeological sites in the Great Zimbabwe, and the raw beauty and power of Victoria Falls.

Space is limited. With significant savings of more than \$1,000 per couple, we anticipate this tour will fill quickly. Be certain to reserve your spot today and share this brochure with family and friends who may be interested in traveling with you.


Please reserve by contacting the Vanderbilt Travel Office by calling 615.322.3673.

With best wishes,



Cary DeWitt Allyn
Director, Vanderbilt Travel Program

The Vanderbilt Travel Program strives to engage Vanderbilt alumni, parents and friends of all ages, keeping them connected with each other and Vanderbilt. Each carefully designed trip offers unparalleled learning opportunities for an exclusive “beyond the classroom experience.”

 Orbridge takes seriously the responsibility to minimize our global environmental impact. Each year we plant 100,000 trees in U.S. State Forests with afforestation needs as an ongoing initiative among our evolving sustainability efforts. Learn more at orbridge.com/going-green.

Your 16-Day Itinerary (subject to change)

Day 1: En Route from U.S.

Day 2: Arrive in Johannesburg, South Africa / Pretoria
Welcome beverage, evening at leisure
Overnight: Sheraton Pretoria

Day 3: Pretoria (B,D)
Embarkation and dinner
Overnight: *African Explorer*

Day 4: Full day aboard train (B,L,D)

Day 5: Kingdom of Eswatini (B,D)
Ezulwini valley, Mbabane, Pigg's Peak, local craft markets
Overnight: *African Explorer*

Day 6: Maputo, Mozambique (B,L,D)
Panoramic bus tour, botanical gardens, Maputo Bay Market
Overnight: *African Explorer*

Day 7: Kruger National Park (B,L,D)
Full-day safari and game sighting, bush dinner
Overnight: Kruger Gate Hotel

Day 8: Drakensberg Mountains (B,D)
Morning game drive, bus transport through Bylde River Canyon
Overnight: *African Explorer*

Day 9: Makalali Game Reserve (B,L,D)
Morning safari, afternoon at leisure
Overnight: *African Explorer*

Day 10: Travel Day to Zimbabwe (B,L,D)
Journey through Beitbridge and the Soutpansberg Mountains, biltong tasting
Overnight: *African Explorer*

Day 11: Great Zimbabwe (B,D)
City bus excursion and ruins touring
Overnight: *African Explorer*

Day 12: Matobo National Park / Bulawayo (B,D)
Matobo Hills, rock art sites, Cecil Rhodes' Grave
Overnight: *African Explorer*

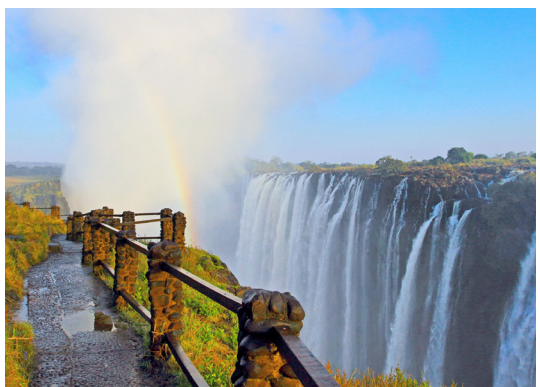
Day 13: Hwange National Park (B,L,D)
Full-day park safari and exploration
Overnight: *African Explorer*

Day 14: Victoria Falls, Zambia (B,D)
Leisure time to enjoy the falls and the Zambezi River boat tour, farewell dinner
Overnight: Victoria Falls Safari Lodge

Day 15: Victoria Falls / Depart for U.S. (B)

Day 16: En Route / Arrive in U.S.

Activity Level: This safari program requires an ability to board and disembark a train as well as walk safely over uneven and slippery ground without assistance, transport luggage a short distance, get in and out of a 4x4 vehicle, and physically tolerate vehicle motion on sometimes bumpy roads.



Relax

- Travel in style aboard the *African Explorer* as you follow unique routing through South Africa, Eswatini, Mozambique, and Zimbabwe.

Discover

- Admire the magnificent views from Pretoria, South Africa's capital city.
- Discover stunning wildlife while on an extensive safari through Kruger National Park.
- Enjoy the Panorama Route as you travel through the rugged Drakensberg mountain range. This legendary route winds along the steeply sloping Drakensberg escarpment, offering spectacular views across the plains of the Lowveld, more than 3,000 feet below.
- Spot for members of The Big Five during a safari at Makalali Game Reserve.

Admire

- At Zambezi National Park, explore the Zambezi River by boat with the chance of viewing elephants and hippos from up close.
- Visit Matobo National Park, a UNESCO World Heritage Site, to view the grave of Cecil Rhodes, who founded the colonial territory of Rhodesia, today's Zimbabwe.
- Set out for a full day safari at Hwange National Park, Zimbabwe's largest and most important game reserve, renowned for its herds of elephants and Cape buffalo.

What's Included

- 10 nights accommodations aboard the *African Explorer* train, plus one night each of deluxe lodging at Pretoria, Kruger National Park, and Victoria Falls
- 13 breakfasts, 6 lunches, and 12 dinners (including a welcome drink and farewell dinner)
- Expert naturalist guides throughout, with an Orbridge Expedition Leader and physician
- Gratuities for Orbridge Expedition Leader, onboard guides, drivers, porters, attendants, and wait staff for included meals
- Transfer and excursion transportation aboard air conditioned buses
- All excursions described in the itinerary, including admission and park fees
- Airport transfers for guests arriving and departing during the suggested times



African Explorer

Evenings include three-course dinners, featuring African and European culinary specialties, in one of two air conditioned dining cars. In the bar car, relax with a cool Windhoek lager or one of South Africa's famous wines, listen to presentations given by your tour guide, enjoy a good read or have a stimulating conversation with fellow travelers.

Take advantage of the open observation platform with uninterrupted views of passing wilderness, facilitating not only sightings of rare animals, but also opportunities to take amazing photographs.

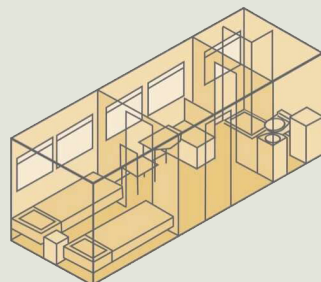
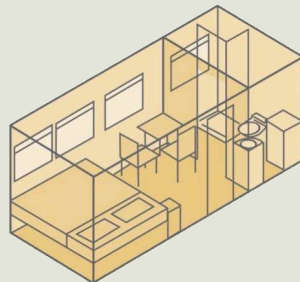
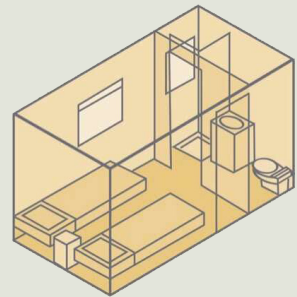
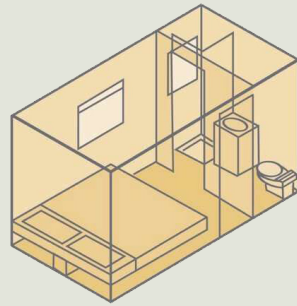
NOTE: There is no internet access on the train.

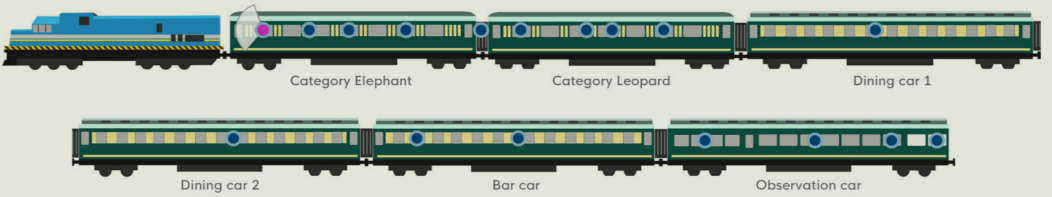
CAR & COMPARTMENT DETAILS

Each compartment features: Private bathroom with shower, windows that open (equipped with blinds and sunshades), individual air-conditioning control, 220/230V electricity sockets, safe, closet, bedside cabinets, hairdryer, towels and toiletries, one complimentary bottle of water daily.

Elephant: approx. 75 sq. ft. accommodating two guests in either two single beds or one double bed

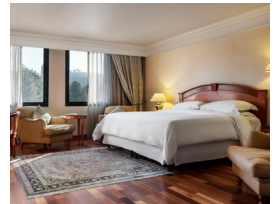
Leopard: approx. 107 sq. ft. accommodating two guests in either two single beds or one double bed





Hotel Accommodations (subject to change)

SHERATON PRETORIA
 The Sheraton Pretoria Hotel offers luxurious, modern rooms designed for comfort directly across from the Union Buildings and their vast gardens.



KRUGER GATE HOTEL
 At the Kruger Gate Hotel, guests enjoy elegant accommodations with uninterrupted views over the Sabie riverbed into the world-famous Kruger National Park. With refined Africa-inspired décor, all rooms have en suite bathrooms, air-conditioning, free Wi-Fi and in-room dining.



VICTORIA FALLS SAFARI LODGE
 On a plateau overlooking the Zambezi National Park, Victoria Falls Safari Lodge is renowned for its views of a wildlife-rich waterhole visited by herds of elephant, buffalo, and kudu.



Optional Pre-Tour Cape Town



Exquisite scenery, intriguing history, and world-class dining beckons travelers to the most cosmopolitan city in South Africa—Cape Town. At the southernmost tip of Africa, separated from the rest of the continent by a ring of mountains, this city hosts a variety of cultures. Gain an appreciation for the vibrant Cape Town of today by peering into its tumultuous past.

Pre-Tour Itinerary *(subject to change)*

Day +1: En Route from U.S.

Day +2: Arrive in Cape Town, South Africa
Enjoy welcome drink and unwind during an evening at leisure
Overnight: Mount Nelson Hotel by Belmond

Day +3: Cape Town (B,L)
Panoramic city tour, cable car ride,
Company's Garden, Greenmarket Square,
Malay Quarter, food and wine tasting,
evening at leisure
Overnight: Mount Nelson Hotel by Belmond

Day +4: Cape Town (B,L)
Half-day private guided tour of Robben Island
Overnight: Mount Nelson Hotel by Belmond

Day +5: Cape Town / Flight to
Johannesburg / Main Program
Begins (B)



What's Included

- 3 nights accommodations at Mount Nelson Hotel by Belmond (or similar)
- 3 breakfasts and 2 lunches
- Guided tours, plus cable car and ferry rides
- Local market experience and wine tasting at an estate
- Flight from Cape Town to Johannesburg
- Transportation for included activities
- Luggage portage
- Gratuities to local guide, driver, porters, hotel staff, and wait staff for included meals
- Airport transfers for guests arriving during the suggested times



African Expedition by Private Train

AUGUST 10-24, 2024

Cape Town Pre-Tour: August 7-11, 2024

| Category | Standard Rate | Special Rate* |
|-----------------|---------------------|---------------|
| Elephant Double | \$11,499 | \$10,995 |
| Leopard Double | \$13,499 | \$12,995 |
| Elephant Single | \$15,499 | \$14,995 |
| Leopard Single | \$17,499 | \$16,995 |

| Cape Town Pre-Tour | | |
|--------------------|--------------------|---------------|
| Category | Standard Rate | Special Rate* |
| Double | \$3,199 | \$2,995 |
| Single | \$4,099 | \$3,895 |

Reserve by Credit Card:

Call the Vanderbilt Travel Office at **615.322.3673**

Reserve by Check:

Made payable to **Orbridge, LLC**

Mail to: Orbridge, P.O. Box 1376

Poulsbo, WA 98370

Email questions to: alumni.travel@vanderbilt.edu

GUEST INFORMATION:

Guest #1 Name (Title/Salutation): _____

Name (as preferred on badge): _____ Class Year: _____

Email: _____ D.O.B.: _____

Home Phone: _____ Alt. Phone: _____

Address: _____

City: _____ State: _____ Zip: _____

Guest #2 Name (Title/Salutation): _____

Name (as preferred on badge): _____ Class Year: _____

Email: _____ D.O.B.: _____

Home Phone: _____ Alt. Phone: _____

DEPOSIT PAYMENT:

Check ACH (Automated Clearing House) MasterCard/Visa American Express Discover

Card #: _____ Exp. Date: _____ CVV: _____

Name (as printed on card): _____

Billing Address (if different from above): _____

City: _____ State: _____ Zip: _____

CATEGORY SELECTION & DEPOSIT:

Category Preference: 1st choice _____ 2nd choice _____

_____ guests joining pre-tour (\$500/person) +

_____ guests joining program (\$2,500/person) = **TOTAL DEPOSIT: \$** _____

I/we have read, understand, and agree to the full Terms & Conditions at terms.orbridge.com and the COVID-19 Acknowledgement at orbridge.com/wellness; and I/we agree that Orbridge, LLC is authorized to charge my credit card above and/or take my/our deposit for this program.

Signature: _____ Date: _____

Reservations, Deposits and Final Payment. To secure your reservation, deposits are due upon placing a reservation as follows: \$2,500 per person per program and \$500 per person for any pre/post-tour. Orbridge accepts payment by check, ACH, wire or major credit card. Final payment is due 195 days prior to the departure date. Reservations made after the final payment due date are due at the time of registration. If final payment is not received by the final payment due date, Orbridge may cancel your reservation in its sole discretion with no right of refund. CST#2098750-40 WST#602828994

Reservation Grace Period. Reservation Grace Period. Reservations made 226+ days prior to the departure date may be cancelled within 30 days following the reservation date ("Grace Period") for a full refund. Notice of cancellation must be received in writing during the Grace Period. The date of receipt will be used for the effective date.

Reservation Cancellations and Refunds. Notice of cancellation must be submitted to Orbridge in writing. The date of receipt will be used for the effective date. If the cancellation notice is received after the Grace Period (if applicable): (a) 196+ days prior to the departure date, all monies will be refunded less an administrative fee of \$950 per person for the main program and \$200 per person for a pre/post-tour; (b) 195-150 days prior to the departure date, a 25% cancellation fee will be applied to the full cost of the program and the balance will be refunded; (c) 149-120 days prior to the departure date, a 50% cancellation fee will be applied to the full cost of the program and the balance will be refunded; (d) within 119 days prior to the departure date, a 100% cancellation fee will be applied to the full cost of the program. A 100% cancellation fee applies to all non-refundable airfare. Refunds, if any, will be processed within 30 days of our receipt of your written notice.

For complete Terms & Conditions, visit terms.orbridge.com | Copyright © 2023 Orbridge, LLC | orbridge.com | (866) 639-0079

*Special group rate; limited offer. Rates are per person, based on double occupancy except where noted as Single, in U.S. dollars. Single availability limited. Airfare from Cape Town to Johannesburg is included in the pre-tour rate. Airfare otherwise not included. **A complement to the educational component of this journey, Expedition Libraries are curated collections of reading and resources tailored to this program. Place your deposit on or before the specified date, and one Expedition Library per household will be sent upon receipt of final payment. Libraries may be purchased; please call for details.





African Expedition by Private Train

AUGUST 10-24, 2024

Special Vanderbilt Rate: **Save more than \$1,000**
per couple

FREE Expedition Library
AN EXCLUSIVE EARLY
RESERVATION BONUS

Reserve your space by
October 27, 2023

to receive the FREE Orbridge Expedition
Library we've assembled for this program. **

Featuring **W. Frank Robinson** Assistant Professor of History

W. Frank Robinson is an Assistant Professor of History at Vanderbilt University. He completed his undergraduate studies at the Johns Hopkins University and received his graduate degrees from the University of Florida and Auburn University with concentrations in African Area Studies and Latin American history. He specializes in the histories of



Latin America, Africa, and the Caribbean, with a focus on twentieth century political and social movements, nationalism and populism, and Caribbean diaspora communities. Grants and fellowships from the IIE Fulbright Program, the National Endowment for the Humanities, and the National Defense Education Act Title VI have helped fund his studies, research, and writing. His work at the Center for African Studies at the University of Florida explored tactics and strategies of African resistance to European colonial regimes in southern Africa.



VANDERBILT
Alumni Association

Vanderbilt Travel Program
2301 Vanderbilt Place
PMB 407735
Nashville, TN 37240-7735

PRSRT STD
U.S. POSTAGE
PAID
PERMIT NO. 825
SAN DIEGO, CA